

2019 Product Guide



Quality Products



Exceptional Service



Technical Expertise



More for the Contractor

Helping you understand the products is only the surface. We want you to succeed, win projects and close deals. We are here to help. Need specifications or roof details - we got it. Need help promoting your business and tools to win project - we have that too!

Ordering Procedures and Details

For current pricing refer to the current IB price list available from your local IB Representative.

TO ORDER

Phone Orders:

Call - 800.426.1626

Between 7:00am and 7:00pm CST

Email to Orders@IBroof.com

Fax to 888.741.1160.

- Call to confirm fax received

Quotes

Please contact your local IB representative to obtain quotes for special order items not listed on the price list.

Email to Quotes@IBroof.com

Key Contacts

IB Roof Systems is committed to help you with all of your ordering, technical concerns and on going customer support. Here are key contacts for your reference. If you have any concerns or questions - reach out via phone, email or even text!

IB Roof Systems:

Customer Service Department
800.426.1626

Technical Service:

Joel King

Inside Sales Representatives:

Shawn Stanley
Tiffany Esquivel
Brian Mitchell
Velma Villarreal

Accounts Receivable:

Mona Gary

National Business Development Director:

Mike Swartzter

Shipping Procedures

After you have placed your order with us an email order confirmation will be sent. Please check this carefully to insure that we have entered the correct items, quantities, shipping location etc.

Once your order has shipped, a shipping confirmation will be sent. The confirmation will contain shipping and tracking information.

We make every effort to ship your order complete. If an item you have ordered is unavailable, an IB Customer Service Representative will contact you to discuss your options.

Receiving Your Order

It is very important that you inspect your shipment upon delivery and note any damages on the bill of lading before the driver leaves.

Unloading freight from enclosed trucks can be problematic if you do not have the proper equipment. If this is the case we can ship your material to the closest trucking company terminal for a will call pick-up. Please discuss any special shipping requirements with our customer service department when placing your order.

Free Freight

If you order quantities of 100 squares or more, you will receive free shipping.

TABLE OF CONTENTS

Membranes

IB PVC Single-Ply 50.....	6
IB PVC Single-Ply 60.....	6
IB PVC Single-Ply 80.....	6
IB PVC Single-Ply ChemGuard™ 50.....	6
IB PVC Single-Ply ChemGuard™ 80.....	7
IB PVC Single-Ply Fleece Back 50.....	7
IB PVC Single-Ply Fleece Back 60.....	7
IB PVC Single-Ply Fleece Back 80.....	7
IB DeckShield.....	8
IB Walk Tread.....	8
CrossGrip.....	8

Insulation / Coverboard / Separation

IB Energy Board II.....	9
IB Energy Board II Tapered.....	9
IB Energy Board III.....	9
IB Energy Board III Tapered.....	9
FanFold Roof Underlayment.....	9
DensDeck Roof Board.....	10
DensDeck Prime Roof Board.....	10
Securock Glass-Mat Roof Board.....	10
Securock Gypsum-Fiber Roof Board.....	10
ACFoam-HD CoverBoard.....	10
IB Separator Sheet.....	11
IB Poly Separator Sheet.....	11
IB HD Poly Separator Sheet.....	11
Sopravap'r.....	11
IB Fire Sheet 10.....	11

Plates & Fasteners

2" Barbed Seam Plates.....	12
2 3/8" Barbed Seam Plates.....	12
2" Gyptec Stress Plates.....	12
3" Insulation Plates.....	12
3" Gyptec Stress Plates.....	12
Isoweld Plates.....	12
RhinoBond Plates.....	12
IB SD #12 Insulation Fastener.....	13
IB HD #14 Roofing Fastener.....	13
IB XHD #15 Roofing Fastener.....	13
#12 Purlin Fastener.....	13
Dekspike Roofing Fastener.....	14
Banding Clamps.....	14
Gyptec Roofing Fastener.....	14
Band-It-Clips.....	14
Zinc Nail-ins.....	14
Band-It-Strap.....	14
Band-It Tension Tool.....	14

Adhesives

IB Water Borne Adhesive.....	15
IB Vertibond Adhesive.....	15
Solar Seal 900 Caulking.....	15
1-Part Pourable Penetration Sealant.....	15
IB Water Stop.....	15
M-1 Sealant.....	15
Millennium Universal Primer.....	15
IB Rapid Set Insulation Adhesive.....	15

TABLE OF CONTENTS

Adhesives

Millennium PG-1.....	16
Olybond 500 SpotShot.....	16
Elastocol Stick.....	16
Elastocol Stick Zero.....	16
CR-20.....	17
Polysset Board-Max.....	17
Roof Seal.....	17

Flashings & Vents

Short A Cone.....	18
Split Short A Cone.....	18
A Cone.....	18
B Cone.....	18
C Cone.....	19
D Cone.....	19
E Cone.....	19
0 to 5 Cone - 4".....	19
0 to 5 Cone - 6".....	20
0 to 5 Cone - 8".....	20
Oval 0 to 5 Cone - 4".....	20
Non-Reinforced Detail Flashing Roll.....	20
Round T-Joint Patch.....	21
Inside Corner.....	21
IB Pitch Pan.....	21
Outside Corner.....	21
Universal Outside Corner.....	22
IB Cover Strip.....	22
Flexible Metal Profile.....	22
Foil Tape.....	22
IB Non-Reinforced 5" x 8" Metal Joint Patch..	22

Flashings & Vents

U-Anchor 1400.....	23
U-Anchor 2000.....	23
U-Anchor 2400.....	23
U-Anchor 3400.....	24
U-Anchor 4400.....	24
E-Curb Kits - 6" Round.....	25
E-Curb Kits - Universal.....	25
E-Curb Kits - 4" Round.....	25
IB Recover Membrane Vent.....	25
IB 8" Roof Vent.....	25
IB Dryer Vent / Exhaust Vent & Vent No-Cone	26

Drains

2" IB Retrofit Drain & Target.....	27
3" IB Retrofit Drain & Target.....	27
4" IB Retrofit Drain & Target.....	27
5" IB Retrofit Drain & Target.....	27
6" IB Retrofit Drain & Target.....	28
2" IB Retrofit Overflow Drain & Target.....	28
3" IB Retrofit Overflow Drain & Target.....	28
4" IB Retrofit Overflow Drain & Target.....	28
5" IB Retrofit Overflow Drain & Target.....	29
6" IB Retrofit Overflow Drain & Target.....	29
2" IB Drain Liner & Drop Scupper.....	30
3" IB Drain Liner & Drop Scupper.....	30
4" IB Drain Liner & Drop Scupper.....	30

TABLE OF CONTENTS

Metals

IB Clad Drip Edge Metal.....	31
IB Clad Drip Edge Stainless Steel Metal.....	31
IB Clad Gravel Stop Metal.....	31
IB Clad Gravel Stop Stainless Steel Metal.....	31
IB Metal Cleat.....	31
IB Stainless Steel Cleat.....	31
IB Aluminum Termination Bar.....	31
IB Clad Termination Bar.....	32
IB Snap Fascia.....	32
AnchorTite® Drip Edge.....	32
IB PVC Clad Metal 4 x 10 Sheet.....	32

Customs

Post Flashing 0-30" (small).....	33
Post Flashing 31-42" (medium).....	33
Post Flashing 43-50" (large).....	33
Post Flashing 51" + (extra large).....	33
Custom Cones 0-18" (small).....	33
Custom Cones 19-27" (medium).....	33
Custom Cones 28-34" (large).....	33
Custom Cones 35" + (extra large).....	33
Custom Drain Liner.....	34
Custom PVC Clad Metal (small).....	34
Custom PVC Clad Metal (medium).....	34
Custom PVC Clad Metal (large).....	34
Custom PVC Clad Metal (extra large).....	34
Custom PVC Clad Stainless Metal (small).....	34
Custom PVC Clad Stainless Metal (medium).....	34
Custom PVC Clad Stainless Metal (large).....	34
Custom PVC Clad Stainless Metal (extra large).....	34

Customs

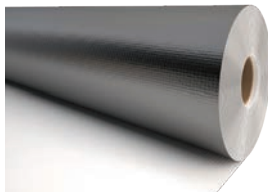
Custom Overflow Scupper 0-20" (small).....	35
Custom Overflow Scupper 21-30" (medium).....	35
Custom Overflow Scupper 31-40" (large).....	35
Custom Overflow Scupper 41" + (extra large).....	35
Custom Through Wall Scupper (small).....	35
Custom Through Wall Scupper (medium).....	35
Custom Through Wall Scupper (large).....	35
Custom Through Wall Scupper (extra large)....	35

Tools

isoweld® Tool with 6 Magnets.....	36
isoweld® Backpack Tool with 6 Magnets.....	36
Leister V2 Varimat Auto Welder w/Case.....	36
Leister 120V Uniroof AT w/Case.....	36
Leister 230V Uniroof AT w/Case.....	36
Leister 220V Varimat Cord.....	36
Leister 110v Hand Welder ST.....	37
Leister Hand Welder Nozzle 40mm.....	37
Leister Hand Welder Nozzle 20mm.....	37
Hand Welder Element 120V 1600W-S.....	37
Hand Welder Element 120V 1550W-ST.....	37
IB Hand Welder Kit.....	37
Winco 12K Generator.....	37
IB Manual Millennium Heavy Duty Applicator.....	38
IB Battery Powered Millennium Applicator.....	38
IB Hand Welder Bag Only.....	38
Membrane Slitter.....	38
Seam Probe.....	38
2" Silcon Hand Roller.....	38
Membrane Shears.....	38
IB Retrofit Drain Screwdriver.....	38

MEMBRANES

IB PVC Single-Ply 50



Polyester scrim reinforced, compounded PVC resin based sheet with plasticizers, stabilizers, fillers, pigments and other proprietary materials. An anti-wicking scrim is applied for added strength, tear resistance and enhanced moisture resistance.

Product No	Roll Size	Color
1-50W	50 Mil 6'	White
1-505W	50 Mil 3'	White
1-50G	50 Mil 6'	Gray
1-505G	50 Mil 3'	Gray
1-50T	50 Mil 6'	Tan
1-505T	50 Mil 3'	Tan
1-50B	50 Mil 6'	Brown
1-505B	50 Mil 3'	Brown

Packaging:

Size	Sq Ft	Weight (lbs)	Pallet
6' x 90'	540	175 per roll	15
3' x 90'	270	90 per roll	30 ½

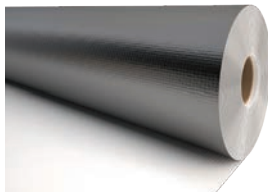
Features:

- 24 mil top ply weathering film
- Helps reduce heat transfer through roof into the building's interior

Colors:

White	Tan	Brown	Gray
-------	-----	-------	------

IB PVC Single-Ply 80



Polyester scrim reinforced, compounded PVC resin based sheet with plasticizers, stabilizers, fillers, pigments and other proprietary materials. An anti-wicking scrim is applied for added strength, tear resistance and enhanced moisture resistance.

Product No	Roll Size	Color
1-80W60	80 Mil 6'	White
1-805W60	80 Mil 3'	White
1-80G60	80 Mil 6'	Gray
1-805G60	80 Mil 3'	Gray
1-80T60	80 Mil 6'	Tan
1-805T60	80 Mil 3'	Tan
1-80BRN60	80 Mil 6'	Brown
1-805BRN60	80 Mil 3'	Brown
1-80BRKRD60	80 Mil 6'	Red*
1-805BRKRD60	80 Mil 3'	Red*
1-80GRN60	80 Mil 6'	Green*
1-805GRN60	80 Mil 3'	Green*

Packaging:

Size	Sq Ft	Weight (lbs)	Pallet
6' x 60'	360	191 per roll	15
3' x 60'	180	98 per roll	30 ½

Features:

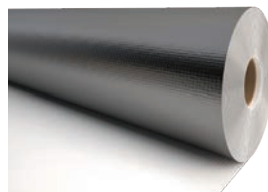
- 38 mil top ply weathering film
- Helps reduce heat transfer through roof into the building's interior

*Ships from Oregon/Illinois Distribution

Colors:

White	Tan	Brown	Red	Green	Gray
-------	-----	-------	-----	-------	------

IB PVC Single-Ply 60



Polyester scrim reinforced, compounded PVC resin based sheet with plasticizers, stabilizers, fillers, pigments and other proprietary materials. An anti-wicking scrim is applied for added strength, tear resistance and enhanced moisture resistance.

Product No	Roll Size	Color
1-60W	60 Mil 6'	White
1-605W	60 Mil 3'	White
1-60G	60 Mil 6'	Gray
1-605G	60 Mil 3'	Gray
1-60T	60 Mil 6'	Tan
1-605T	60 Mil 3'	Tan
1-60S	60 Mil 6'	Cool Sand*
1-605S	60 Mil 3'	Cool Sand*
1-605TO	60 Mil 6'	Cool Stone*
1-605STO	60 Mil 3'	Cool Stone*

Packaging:

Size	Sq Ft	Weight (lbs)	Pallet
6' x 90'	540	217 per roll	12
3' x 90'	270	111 per roll	24 ½

Features:

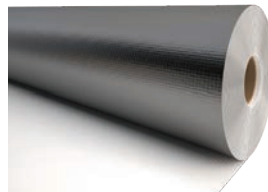
- 28 mil top ply weathering film
- Helps reduce heat transfer through roof into the building's interior

*Ships from Nevada/Texas Distribution

Colors:

White	Cool Sand	Cool Stone	Tan	Gray
-------	-----------	------------	-----	------

IB PVC Single-Ply ChemGuard™ 50



Polyester scrim reinforced, compounded PVC resin based sheet with DuPont® Elvaloy® KEE, plasticizers, stabilizers, fillers, pigments and other proprietary materials. An anti-wicking scrim is applied for added strength, tear resistance and enhanced moisture resistance.

Product No	Roll Size	Color
1-50CGW	50 Mil CG 6'	White
1-505CGW	50 Mil CG 3'	White

Packaging:

Size	Sq Ft	Weight (lbs)	Pallet
6' x 90'	540	175 per roll	15
3' x 90'	270	90 per roll	30 ½

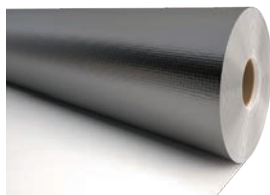
Features:

- 24 mil top ply weathering film
- Helps reduce heat transfer through roof into the building's interior
- ChemGuard™ is a specially designed chemical resistant CPA membrane for industrial and restaurant applications.

Colors:

White

IB PVC Single-Ply ChemGuard™ 80



Polyester scrim reinforced, compounded PVC resin based sheet with DuPont® Elvaloy® KEE, plasticizers, stabilizers, fillers, pigments and other proprietary materials. An anti-wicking scrim is applied for added strength, tear resistance and enhanced moisture resistance.

Product No	Roll Size	Color
1-80CGW60	80 Mil CG 6'	White
1-805CGW60	80 Mil CG 3'	White

Packaging:

Size	Sq Ft	Weight (lbs)	Pallet
6' x 60'	360	191 per roll	15
3' x 60'	180	98 per roll	30 ½

Features:

- 38 mil top ply weathering film
- Helps reduce heat transfer through roof into the building's interior
- ChemGuard™ is a specially designed chemical resistant CPA membrane for industrial and restaurant applications.

Colors:

White

IB PVC Single-Ply Fleece Back 50



Polyester scrim reinforced, compounded PVC resin based sheet with plasticizers, stabilizers, fillers, pigments and other proprietary materials. An anti-wicking scrim is applied for added strength, tear resistance and enhanced moisture resistance. The underside of the membrane has a tough polyester fleece backing.

Product No	Roll Size	Color
1-50WFB	50 Mil FB 6'	White

Packaging:

Size	Sq Ft	Weight (lbs)	Pallet
6' x 90'	540	192 per roll	10

Features:

- 24 mil top ply weathering film
- Helps reduce heat transfer through roof into the building's interior
- Excellent flexibility in all climates

Colors:

White

IB PVC Single-Ply Fleece Back 60



Polyester scrim reinforced, compounded PVC resin based sheet with plasticizers, stabilizers, fillers, pigments and other proprietary materials. An anti-wicking scrim is applied for added strength, tear resistance and enhanced moisture resistance. The underside of the membrane has a tough polyester fleece backing.

Product No	Roll Size	Color
1-60WFB	60 Mil FB 6'	White

Packaging:

Size	Sq Ft	Weight (lbs)	Pallet
6' x 90'	540	234 per roll	10

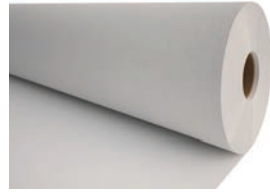
Features:

- 28 mil top ply weathering film
- Helps reduce heat transfer through roof into the building's interior
- Excellent flexibility in all climates

Colors:

White

IB PVC Single-Ply Fleece Back 80



Polyester scrim reinforced, compounded PVC resin based sheet with plasticizers, stabilizers, fillers, pigments and other proprietary materials. An anti-wicking scrim is applied for added strength, tear resistance and enhanced moisture resistance. The underside of the membrane has a tough polyester fleece backing.

Product No	Roll Size	Color
1-80WFB60	80 Mil FB 6'	White

Packaging:

Size	Sq Ft	Weight (lbs)	Pallet
6' x 60'	360	200 per roll	10

Features:

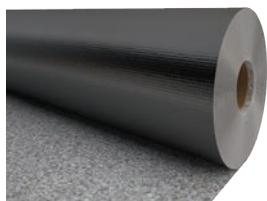
- 38 mil top ply weathering film
- Helps reduce heat transfer through roof into the building's interior
- Excellent flexibility in all climates

Colors:

White

SINGLE-PLY MEMBRANES

IB DeckShield



DeckShield™ was specifically designed for residential exterior walkways, patios, decks, balconies, stairways, around swimming pools, hot tubs, and locker rooms.

Product No	Roll Size	Color
1-052DSG	60 Mil -5'9"	Gray
1-052DST	60 Mil -5'9"	Tan

Packaging:			
Size	Sq Ft	Weight (lbs)	Pallet
5'9" x 90'	531	183 per roll	10

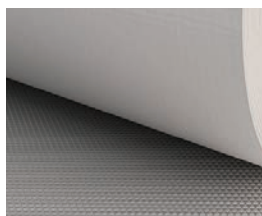
Features:

- Skid-resistant waterproofing
- Available in a roll for easy layout and installation
- Colors are fade resistant
- Suitable for all types of climates

Colors:



IB Walk Tread



80 mil calendared and embossed PVC walk tread with a reinforced scrim backing that can be installed either fully adhered and perimeter welded or loose laid and perimeter welded to an IB PVC Single-Ply Membrane system.

Product No	Roll Size	Color
1-3GWP100	80 Mil 3'	Gray

Packaging:			
Size	Sq Ft	Weight (lbs)	Pallet
3' x 60'	180	88 per roll	10

Features:

- Raised pyramid traction surfacing in gray color
- Available in a roll for easy layout and installation
- Heat welds directly to membrane
- Can be fully adhered or loose-laid

Colors:



CrossGrip



Slip resistant walkway system for high traffic roof-top areas. It is ideal for roof and worker protection in high maintenance rooftop areas, where access for installation and maintenance of solar power systems, HVAC, telecommunications, and auxiliary equipment is necessary.

Product No	Roll Size	Color
1-3CROSSGRIPBLK	3' x 33'	Black

*Special Order

Packaging:			
Size	Sq Ft	Weight (lbs)	Pallet
3' x 33'	99	130 each	

Features:

- Open grid "duckboard" design with cross directional top ribs
- Durable one-piece welded construction for long life and minimal maintenance
- Excellent slip resistance

*Ships from Nevada Distribution

Colors:



INSULATION / COVERBOARD / SEPARATION

IB Energy Board II



Closed-cell polyisocyanurate foam core integrally bonded to non-asphaltic, fiber-reinforced organic felt facers.

Call for Quote

Product No	Board Size
3-ISOEB	4' x 8' & 4' x 4'

Packaging:	Thickness	Weight (lbs)	Pallet
Size	1" - 4"	Various Thicknesses	Call for Specs
4' x 8' & 4' x 4'			

Features:

- Excellent LTTR to thickness ration
- Sustainable Building Material
- Reduces cooling and heating loss transmission through roofing assemblies
- Covered component under the IB warranty

IB Energy Board III



Closed-cell polyisocyanurate foam core integrally bonded to non-asphaltic, fiber-reinforced organic felt facers. Taper offered in a variety of slopes, to achieve positive drainage.

Call for Quote

Product No	Board Size
3-ISOEB3	4' x 8' & 4' x 4'

Packaging:	Thickness	Weight (lbs)	Pallet
Size	1" - 4"	Various Thicknesses	Call for Specs
4' x 8' & 4' x 4'			

Features:

- Excellent LTTR to thickness ration
- Sustainable Building Material
- Reduces cooling and heating loss transmission through roofing assemblies
- Covered component under the IB warranty

1/2" FanFold Roof Underlayment



High performance rigid insulation consisting of a closed-cell, lightweight EPS with advanced polymeric laminate facers.

Call for Quote on Large Orders

Product No	Panel Size
3-05FF	2' x 4' x 50' 200sf

IB Energy Board II Tapered



Closed-cell polyisocyanurate foam core integrally bonded to non-asphaltic, fiber-reinforced organic felt facers. Taper offered in a variety of slopes, to achieve positive drainage.

Call for Quote

Product No	Board Size
3-ISOEBT	4' x 8' & 4' x 4'

Packaging:	Thickness	Weight (lbs)	Pallet
Size	1/4"	Call for Specs	
4' x 8' & 4' x 4'	1/2"		
4' x 8' & 4' x 4'	5/8"		

Features:

- Excellent LTTR to thickness ration
- Sustainable Building Material
- Reduces cooling and heating loss transmission through roofing assemblies
- Covered component under the IB warranty

IB Energy Board III Tapered



Closed-cell polyisocyanurate foam core integrally bonded to non-asphaltic, fiber-reinforced organic felt facers. Taper offered in a variety of slopes, to achieve positive drainage.

Call for Quote

Product No	Board Size
3-ISOEB3T	4' x 8' & 4' x 4'

Packaging:	Slope	Thickness	Weight (lbs)	Pallet
Size	1/8", 1/4", 1/2"	0.5" - 2.5"	Call for Specs	
4' x 8' & 4' x 4'				

Features:

- Excellent LTTR to thickness ration
- Sustainable Building Material
- Reduces cooling and heating loss transmission through roofing assemblies
- Covered component under the IB warranty

Features:

- Retains thermal properties
- Lightweight
- High resistance to moisture
- Polymeric laminate facers
- 1.5 lb Density

Packaging:	Thickness	Weight (lbs)	Pallet
Bundles	1/2"	Call for Specs	
1/2" x 4' x 50'			

INSULATION / COVERBOARD / SEPARATION

DensDeck Roof Board



Fiber-glass mat facers are mechanically bonded to a high density gypsum core, providing excellent fire resistance and wind uplift properties.

Call for Quote

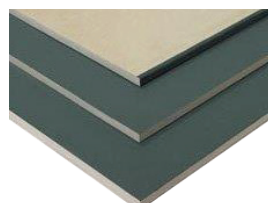
Product No	Board Size
3-DDUP	4' x 8' & 4' x 4'

Packaging:	Thickness	Weight (lbs)
Size		
4' x 8' & 4' x 4'	1/4"	1.2
	1/2"	2.0
	5/8"	2.5

Features:

- UL code ratings available
- FM Approved
- Excellent wind uplift ratings
- Resistant to deterioration, warping, and job-site damage

DensDeck Prime Roof Board



The facer is enhanced to allow adhesives to be applied more uniformly and consistently. Creates a stronger and more economical installation by reducing the amounts of adhesive used and potentially eliminate primers.

Call for Quote

Product No	Board Size
3-DDP	4' x 8' & 4' x 4'

Packaging:	Thickness	Weight (lbs)
Size		
4' x 8' & 4' x 4'	1/4"	1.2
	1/2"	2.0
	5/8"	2.5

Features:

- UL code ratings available
- FM Approved
- Wind uplift ratings
- Resistant to deterioration, warping, and job-site damage

Securock Glass-Mat Roof Board



This high-performance roof board enhances the durability of the entire roofing system when used as cover board in single-ply mechanically attached systems. Its specifically treated core and high-performance glass-mat facer provide protection against fire, mold and moisture.

Call for Quote

Product No	Board Size
3-SRGM	4' x 8'

Packaging:	Thickness	Weight (lbs)	Pallet
Size			
4' x 8'	1/4"	Call for Specs	
4' x 8'	1/2"		
4' x 8'	5/8"		

Features:

- Fire Performance: Meets Factory Mutual (FM) Class 1 and Underwriters Laboratories (UL) Class A fire ratings for unlimited slope in fire barrier applications per UL 790.
- Easier to cut, handle, and install: High-quality mat produces less itchiness than competitive products.
- Moisture and Mold: Fiberglass face and back with treated core provides moisture and mold resistance. Scored a maximum "10" for mold resistance on ASTM D3273.

Securock Gypsum-Fiber Roof Board



This high performance roof board has a unique, fiber-reinforced, homogeneous composition gives the panel strength and water resistance to the core. Achieves high wind uplift ratings with no risk of facer delamination.

Call for Quote

Product No	Board Size
3-SR	4' x 8' & 4' x 4'

Packaging:	Thickness	Weight (lbs)	Pallet
Size			
4' x 8' & 4' x 4'	1/4"	Call for Specs	
4' x 8' & 4' x 4'	1/2"		
4' x 8' & 4' x 4'	5/8"		

Features:

- Superior wind-uplift performance for a wide variety of roof systems
- Excellent fire performance and surface burning characteristics
- Integral water-resistant core ensures moisture and mold resistance

ACFoam-HD CoverBoard



Closed-cell polyisocyanurate foam core integrally bonded to inorganic ACFoam-III coated glass facer.

Call for Quote

Product No	Board Size
3-05HD	4' x 8' & 4' x 4'

Features:

- High Performance Coated Glass Facer
- 2.5 Average LTTR
- Factory Mutual rated for severe hail
- Covered Component under the IB Total Systems Warranty

Packaging:	Thickness	Weight (lbs)	Pallet
Size			
4' x 8' & 4' x 4'	1/2"	Call for Specs	

INSULATION / COVERBOARD / SEPARATION

IB Separator Sheet



High strength, polypropylene scrim reinforced fabric with polypropylene coating on both sides. Used as a separation sheet beneath membranes to resist contaminant, residue transfer and moisture from existing substrates.

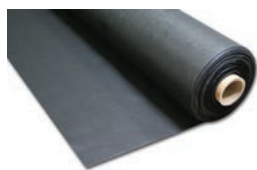
Product No	Roll Size
3-01SEP	5' 10" x 515' 3004sf

Packaging: Size	Thickness	Weight (lbs)	Pallet
5' 10" x 515'	Call for Specs		

Use:

- General duty separation layer between compatible and non-compatible roofing components

IB HD Poly Separator Sheet

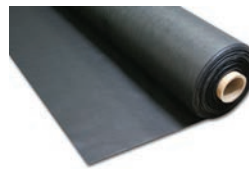


Heavy duty 16 oz polyester based woven fiber sheet. Used as a divorcing layer between membranes and incompatible or contaminated materials and surfaces. Can also service as a protection layer between overburden items. Ideal cushioning layer for ballasted assemblies over concrete decks.

Product No	Roll Size	Weight
3-016SS	7' 6" x 150' 1125sf	135 lbs

Packaging: Size	Thickness	Weight (lbs)	Pallet
7' 6" x 150'		135 per roll	

IB Poly Separator Sheet



Polyester based woven fiber sheet. Used as a divorcing layer between IB membranes and incompatible or contaminated materials and surfaces. Can also service as a protection layer between overburden items.

Product No	Roll Size	Weight
3-045SS36	7' 6" x 360' 2700sf	110 lbs

Packaging: Size	Thickness	Weight (lbs)	Pallet
7' 6" x 360'		110 per roll	

Sopravap'r



Self-adhesive membrane composed of SBS modified bitumen on the bottom surface and a tri-laminated woven polyethylene facer.

Product No	Roll Size	Weight
3-02VBSS	3' 9" x 134' 468 sq ft 3" Overlap	80 lbs

Packaging: Size	Thickness	Weight (lbs)	Pallet
3' 9" x 134'		80 per roll	25

Features:

- High resistance to foot traffic
- Self Sealing
- Quick release silicone film

IB Fire Sheet 10



Constructed using a strong fiber-glass core mat that is coated with a specially formulated acrylic coating that can be installed as the first layer directly over a roof deck.

Product No	Roll Size	Weight
3-0FR10	4' x 250' 1000sf	90 lbs

Packaging: Size	Thickness	Weight (lbs)	Pallet
4' x 250'		90 per roll	20

Features:

- Approved separation layer between insulations
- Effective barrier between EPS and XEPS insulation and PVC membranes
- Superior thermal barrier value

PLATES & FASTENERS

2" Barbed Seam Plates



For use with wood, light gauge, and heavier steel

OD: 2"
ID: .265"/.270"
Thickness: .038"
Finish: AZ 50 Galvalume

Product No	Type	Box Qty
6-0900	2" Seam Plate	1000

2-3/8" Barbed Seam Plates



For use with wood, light gauge, and heavier steel

OD: 2-3/8"
ID: .260"/.262"
Thickness: .038"
Finish: AZ 50 Galvalume

Product No	Type	Box Qty
6-0905	2 3/8" Seam Plate	1000

2" Gyptec Stress Plates



Round Plate for insulation securement

DIA. 2"
Thickness: .032"
Finish: AZ 55 Galvalume

Product No	Type	Box Qty
6-2GYPTec	2" Insulation Plate	1000

3" Insulation Plates



For use with cover boards and insulation over any roof deck

OD: 3"
ID: .260"
Thickness: .019"
Finish: Galvalume

Product No	Type	Box Qty
6-0910	3" Insulation Plate	1000

3" Gyptec Stress Plates



For use with wood, light gauge, and heavier steel

DIA. 3"
Thickness: .017"
Finish: AZ 50 Galvalume

Product No	Type	Box Qty
6-3GYPTec	3" Insulation Plate	1000

Isoweld Plates



For both insulation board attachment and for securing PVC Membrane to the plates by induction welding.

3.12" OD, .260" ID, G90 Finished Steel with PVC adhesive one side, Purple Tint Color. FM Approved.

Product No	Type	Box Qty
6-ISOWELD	3" Plate	500

RhinoBond Plates



RhinoBond Plates are designed to secure roof insulation and thermoplastic* roof membranes.

Plates are 3-in. (80 mm) round, specially coated Galvalume, for steel, wood or structural concrete roof decks.

Product No	Type	Box Qty
6-RBP08A-PVC	3" Insulation Plate	500

PLATES & FASTENERS

IB SD #12 Insulation Fastener



Designed to secure insulation and separation materials to various substrates. Intended to be used with IB 3" insulation plates.

Product No	Type	Box Qty
6-0720	1 1/8" Fastener	1000
6-0730	2 1/4" Fastener	1000
6-0740	2 7/8" Fastener	1000
6-0750	3 1/4" Fastener	1000
6-0760	3 3/4" Fastener	1000
6-0770	4 1/2" Fastener	1000

Special Order

6-0703	3" Fastener	1000
6-0704	4" Fastener	1000
6-0780	5" Fastener	1000
6-0790	6" Fastener	1000
6-0800	7" Fastener	1000
6-0810	8" Fastener	1000

Features:

- Drill point design prevents fastener walking
- 13 threads per inch provides higher pull-out values
- Drill point cuts through gravel and BUR
- E-coat meets FM Approval Standard 4470

IB HD #14 Roofing Fastener



Designed to secure insulation and membrane to various substrates. It is used in conjunction with an IB 3" insulation plate and 2" and 2-3/8" barbed seam plates.

Product No	Type	Box Qty
6-HD001.25	1 1/4" Fastener	1000
6-HD002	2" Fastener	1000
6-HD003	3" Fastener	1000
6-HD004	4" Fastener	1000
6-HD005	5" Fastener	500
6-HD006	6" Fastener	500
6-HD007	7" Fastener	500
6-HD008	8" Fastener	500

Special Order

6-HD009	9" Fastener	500*
6-HD010	10" Fastener	500*
6-HD012	12" Fastener	250*

Features:

- 10 threads per inch for ease of installation in concrete roof decks
- Low profile truss head
- Deep #3 recess provides for ultimate bit engagement
- The Dekfast reduced drill point provides for ultimate pull-out values by producing a minimum opening
- E-coat meets FM Approval Standard 4470

IB XHD #15 Roofing Fastener



Designed to secure insulation and membrane to various substrates. It is used in conjunction with an IB 3" insulation plate and 2" and 2-3/8" barbed seam plates.

Product No	Type	Box Qty
6-XHD002	2" Fastener	1000
6-XHD003	3" Fastener	1000
6-XHD004	4" Fastener	1000
6-XHD005	5" Fastener	500
6-XHD006	6" Fastener	500
6-XHD007	7" Fastener	500
6-XHD008	8" Fastener	500

Special Order

6-XHD009	9" Fastener	500*
6-XHD010	10" Fastener	500*
6-XHD012	12" Fastener	250*
6-XHD014	14" Fastener	250*
6-XHD016	16" Fastener	250*

Features:

- Drill point design prevents fastener walking
- 13 threads per inch provides higher pull-out values
- Drill point cuts through gravel and BUR
- Above average pull out values in 24 & 26 gauge metal
- E-coat meets FM Approval Standard 4470

#12 Purlin Fastener



Designed to secure membrane to structural steel purlins in a metal roof retrofit application. It is used in conjunction with the IB 3" isoweld® plate and 2-3/8" barbed seam plates.

Product No	Type	Box Qty
6-PUR334	3 3/4" Fastener	1000
6-PUR434	4 3/4" Fastener	1000
6-PUR534	5 3/4" Fastener	1000
6-PUR634	6 3/4" Fastener	500

Features:

- Shank diameter is smaller than that of the drill point and the outside thread diameter
- 24 threads per inch provides greater pull-out values
- Steel thickness: 18 ga (.045" nominal) through 1/4" (.250")
- E-coat
- 3.375" thread length (measured from tip of drill point to end of threads)

PLATES & FASTENERS

Dekspike Roofing Fastener



A mushroom head, hammer-in, non-threaded fastener designed to secure approved insulations, cover boards, IB PVC membranes and flashing materials to structural concrete.

*Special Order for all sizes 8" - 14"

Product No	Type	Box Qty
6-DS002	2" Fastener	500
6-DS003	3" Fastener	500
6-DS004	4" Fastener	500
6-DS005	5" Fastener	500
6-DS006	6" Fastener	500
6-DS007	7" Fastener	500

Gyptec Roofing Fastener



Glass-filled nylon auger fastener with a 1" head designed to secure approved IB insulation and membranes to gypsum, lightweight insulating concrete and cementitious wood fiber.

Product No	Type	Box Qty
6-GYPTEC030	3"	500
6-GYPTEC035	3.5"	500
6-GYPTEC040	4"	500
6-GYPTEC045	4.5"	500
6-GYPTEC050	5"	500
6-GYPTEC055	5.5"	500
6-GYPTEC055	6"	500
6-GYPTEC055	6.5"	500

Other sizes call for pricing

Zinc Nail-ins



A mushroom head, expanding zinc plated steel nail-in anchor used for fastening IB termination bars and metal flashings to concrete and filled masonry walls.

Product No	Type	Box Qty
6-ZNI14112	1/4" x 1-1/2" Nail-in	100

Banding Clamps



IB roller ball stainless clamp has a tensile load of 300 pounds.

Length: 40"
Min Dia. 2.3"
Max Dia. 12.25"

Product No	Type	Box Qty
4-SSC1	*Small Stainless Steel Clamp	50
4-SSC2	Large Clamps (D & E Cone)	10

*For C and D Cones

Band-It Clips



IB roller ball stainless clip has a tensile load of 300 pounds.

Length: 20.5"
Max Dia. 6"

Product No	Type
4-BC	Band Clips for band-it clamp

Packaging: 25 per bag
Use: For A and B Cones

Band-It Strap



201 Stainless Steel BAND-IT Band, bright annealed finish sets the standard in banding, clamping and fastening with a combination of high strength and quality appearance.

Width: 3/8 in.
Average breaking strength: 1875 lbs
Box - 3/8 in. x 100 ft.
Weight: 7.00 LBS

Product No	Type
4-SBKIT	Band-It Band

- 201 stainless steel offers good resistance to oxidation and many moderate corrosive agents
- Utilized in general use banding applications
- Can be used with clip style buckles to create band clamps
- Packaged in a standard box

Band-It Tension Tool



The Band-It XE9229 tensions and cuts off up to 12mm wide regardless of material or coating.

Weight: 1.25 lbs.

Product No	Type
8-BTT	Band-It Tension / Cutter

ADHESIVES

IB Water Borne Adhesive



Water based adhesive designed specifically for horizontal bonding applications.

Coverage:

Between 300 - 525 square feet / 3 gallon pail

Colors:

White

Product No	Type	Color
7-WB35	Water Borne	White



Requires ground shipping/additional shipping

Solar Seal 900 Caulking



Multi-purpose polymeric-terpolymer, exterior grade caulking which is compatible with any IB Roof System's membranes and bonds to dry, contaminant free surfaces.

Coverage:

15 linear feet / 11 oz tube

Product No	Type	Color
7-OCW	Solar Seal	White
7-OCB	Solar Seal	Brown
7-OCG	Solar Seal	Gray
7-OCL	Solar Seal	Clear
7-OCBLK	Solar Seal	Black
7-OCT	Solar Seal	Tan
7-OCR	Solar Seal	Red
7-OCS	Solar Seal	Cool Sand
7-OCEG	Solar Seal	Green

Colors:

White	Cool Sand	Black	Tan	Brown	Red	Green	Gray	Clear
-------	-----------	-------	-----	-------	-----	-------	------	-------



Requires ground shipping/additional shipping

IB Water Stop



Butyl-based, one-component mastic designed specifically for sealing roofing membrane. It creates a flexible seal for stopping water penetrating into the roofing systems.

Coverage:

15 linear feet / 10.3 oz tube

Product No	Type	Color
7-WS	Water Stop	Gray

Colors:

Gray



Requires ground shipping/additional shipping

IB Vertibond Adhesive



Synthetic polymer based adhesive designed specifically for horizontal and vertical bonding applications.

Coverage:

60 square feet / gallon
300 square feet / 5 gallon

Product No	Type	Color
7-CA5	Vertibond	Amber

Packaging:

Size	Weight (lbs)	Pail
300 sqft	55	5 gallon

Colors:

Amber



Requires ground shipping/additional shipping

1-Part Pourable Penetration Sealant



Moisture curing, pourable sealant designed for use in pitch pans. It is solvent-free, contains no isocyanates and will not shrink upon curing.

Product No	Type	Color
7-R520W2L	Penetration Sealant	Amber

Features:

- Solvent free, 100% solids will not shrink
- 20 minute skin cure
- Self leveling
- Can be applied at temperatures as low as 30° F

Colors:

Amber



Requires ground shipping/additional shipping

M-1 Sealant



M-1 is a moisture curing, polyether adhesive sealant designed for applications in damp, dry, or cold climates. M-1 is solvent free and contains no isocyanates.

Product No	Type	Color
7-M1	M-1 Sealant	Black

Features:

- Easy to apply, no mixing
- Non-penetrating attachment system
- Rapid Application
- Saves Labor

Colors:

Black



Requires ground shipping/additional shipping

ADHESIVES

Millennium Universal Primer



All-purpose water-based primer designed for use with IB Rapid Set Insulation Adhesive, PG-1 insulation and membrane adhesives. A red tint offers you easy recognition of areas of applied primer.

Coverage:
150-250 sq ft / gallon
3.5 gallon pail

Product No | **Type** | **Color**
7-UP | Universal Primer | Red
*Special Order

Features:

- Easy to apply one-part formulation
- Water based, VOC free
- Quick application, applies in one coat

Colors:

Red



Requires ground shipping/additional shipping

Millennium PG-1



TRI-BUILT® Millennium PG-1 Pump Grade Insulation Adhesive is a two component, VOC free, all purpose, low rise, bulk packaged, polyurethane foamable adhesive that contains no solvents and sets in minutes.

Coverage:
5 gallon (18.9L) Kit: 2,000 - 2,500 sq ft (186m² - 232m²)

Product No | **Type** | **Color**
7-4000 | Surface Coating | Amber
*Special Order

Equipment:

- Millennium Cyclone and Cyclone II Pump machines
- Graco E-10 Reactor
- Graco Predator
- Adhesives Systems Technology GMP-075
- Adhesives Systems Technology PCH GMP-500

Colors:

Amber

IB Rapid Set Insulation Adhesive



One-step, all-purpose, elastomeric foam adhesive designed to bond approved roof insulation and cover boards to a variety of substrates.

Coverage:
400-600 sq ft / case

Product No | **Type** | **Color**
OS-FA15-04 | Insulation Adhesive | White

Colors:

White



Requires ground shipping/additional shipping

Olybond 500 SpotShot



Requires ground shipping/additional shipping



Fast-acting, two-component, low-rise polyurethane foam adhesive designed to adhere a variety of board stocks to a variety of roof substrates in both new and re-roof applications.

Coverage:
400-600 sq ft / case

Product No | **Type** | **Color**
7-OB500SS-R | Spot Shot | White
*Special Order

Features:

- Non-penetrating attachment system
- Odor free
- Low VOC
- Reduces construction noise
- Rapid application

Colors:

White



Requires ground shipping/additional shipping

Elastocol Stick



Proprietary primer composed of synthetic polymers, solvents and resins designed to enhance Soprapap'r Vapor Retarder adhesion to a variety of approved substrates.

Product No | **Type** | **Color**
7-600C | Elastocol Stick | White

*Special Order

Colors:

White



Requires ground shipping/additional shipping

Elastocol Stick Zero



Proprietary primer composed of synthetic polymers, solvents and resins designed to enhance Soprapap'r Vapor Retarder adhesion to a variety of approved substrates.

Coverage:
500-700 sq ft / case

Product No | **Type** | **Color**
7-ESZP | Elastocol Stick Zero | White

*Special Order

Colors:

White



Requires ground shipping/additional shipping

ADHESIVES

CR-20



Low pressure, two-component, polyurethane foam adhesive designed to adhere a variety of IB approved insulations, cover boards, thermal barriers and fleece back membrane to a variety of roof substrates in both new and re-roof applications.

Product No	Type	Color	Coverage sq ft
7-ABTS	CR-20	White	1,800 - 2,000
7-ABTSMINI	CR-20 Mini	White	400 - 600

Features:

- Non-penetrating attachment system
- Odor free
- Low VOC
- Reduces construction noise
- Rapid application

Colors:

White



Requires ground shipping/additional shipping

Polyset Board-Max



Low pressure, two-component, polyurethane foam adhesive designed to adhere IB approved insulation, cover board and thermal barrier boards to a variety of roof substrates in both new and re-roof applications.

Product No	Type	Color	Coverage sq ft
7-BMAX	Board-Max	White	2,800 - 3,000
7-BMAXMINI	Board-Max Mini	White	800 - 900

Features:

- Non-penetrating attachment system
- Odor free
- Low VOC
- Reduces construction noise
- Rapid application

Colors:

White



Requires ground shipping/additional shipping

Roof Seal



Polyset® Roof Seal low pressure, two-component spray polyurethane foam (SPF) is specifically designed to provide a temporary seal of the new roofing membrane to the existing roof system.

Product No	Type	Color
7-RS400*	Sealant	White
7-RS780	Sealant	White

Yield: 400 linear feet @ 2" bead

Yield: 780 linear feet @ 2" bead

FLASHINGS & VENTS

Short A Cone



IB factory fabricated, dielectrically welded reinforced IB PVC Single-Ply base and a non-reinforced IB PVC Single-Ply upper. Designed for easy installation to reduce roof top labor and call backs by reducing workmanship errors.

Product No	Type	Color
4-ASW-R	Short A Cone	White
4-ASG-R	Short A Cone	Gray
4-AST-R	Short A Cone	Tan
4-ASCS-R	Short A Cone	Cool Sand
4-ASSTO-R	Short A Cone	Cool Stone
4-ASCGW-R	Short A Cone	ChemGuard
4-ASB-R	Short A Cone	Brown
4-ASR-R	Short A Cone	Red
4-ASGRE-R	Short A Cone	Green

Pipe Flashing Specifications

Product	Base Flashing	Base	Top	Height	Pipe Size	Box Qty
Short A Cone	14"	3 ¼"	1/4"	5 ½"	1/4" - 1"	25

Use:

IB Pipe Flashings are typically installed around roof top penetrations such as pipe, conduit, gas lines and other circular profile penetrations and flashings.

Colors:

White	Cool Sand	Cool Stone	Tan	Brown	Red	Green	Gray	Chemguard
-------	-----------	------------	-----	-------	-----	-------	------	-----------

Split Short A Cone



IB factory fabricated, dielectrically welded reinforced IB PVC Single-Ply base and a non-reinforced IB PVC Single-Ply upper. Designed for easy installation to reduce roof top labor and call backs by reducing workmanship errors.

Product No	Type	Color
4-ASW-R	Split Short A Cone	White
4-ASG-R	Split Short A Cone	Gray
4-AST-R	Split Short A Cone	Tan
4-ASCS-R	Split Short A Cone	Cool Sand
4-ASSTO-R	Split Short A Cone	Cool Stone
4-ASCGW-R	Split Short A Cone	ChemGuard
4-ASB-R	Split Short A Cone	Brown
4-ASR-R	Split Short A Cone	Red
4-ASGRE-R	Split Short A Cone	Green

Pipe Flashing Specifications

Product	Base Flashing	Base	Top	Height	Pipe Size	Box Qty
Split Short A Cone	14"	3 ¼"	1/4"	5 ½"	1/4" - 1"	25

Use:

IB Pipe Flashings are typically installed around roof top penetrations such as pipe, conduit, gas lines and other circular profile penetrations and flashings.

Colors:

White	Cool Sand	Cool Stone	Tan	Brown	Red	Green	Gray	Chemguard
-------	-----------	------------	-----	-------	-----	-------	------	-----------

A Cone



IB factory fabricated, dielectrically welded reinforced IB PVC Single-Ply base and a non-reinforced IB PVC Single-Ply upper. Designed for easy installation to reduce roof top labor and call backs by reducing workmanship errors.

Product No	Type	Color
4-AW-R	A Cone	White
4-AG-R	A Cone	Gray
4-AT-R	A Cone	Tan
4-AS-R	A Cone	Cool Sand
4-ASTO-R	A Cone	Cool Stone
4-ACGW-R	A Cone	ChemGuard
4-AB-R	A Cone	Brown
4-AR-R	A Cone	Red
4-AGRE-R	A Cone	Green

Pipe Flashing Specifications

Product	Base Flashing	Base	Top	Height	Pipe Size	Box Qty
A Cone	15"	4 ½"	1"	8 ½"	1" - 2 ¾"	25

Use:

IB Pipe Flashings are typically installed around roof top penetrations such as pipe, conduit, gas lines and other circular profile penetrations and flashings.

Colors:

White	Cool Sand	Cool Stone	Tan	Brown	Red	Green	Gray	Chemguard
-------	-----------	------------	-----	-------	-----	-------	------	-----------

B Cone



IB factory fabricated, dielectrically welded reinforced IB PVC Single-Ply base and a non-reinforced IB PVC Single-Ply upper. Designed for easy installation to reduce roof top labor and call backs by reducing workmanship errors.

Product No	Type	Color
4-BW-R	B Cone	White
4-BG-R	B Cone	Gray
4-BT-R	B Cone	Tan
4-BS-R	B Cone	Cool Sand
4-BSTO-R	B Cone	Cool Stone
4-BCGW-R	B Cone	ChemGuard
4-BB-R	B Cone	Brown
4-BR-R	B Cone	Red
4-BGRE-R	B Cone	Green

Pipe Flashing Specifications

Product	Base Flashing	Base	Top	Height	Pipe Size	Box Qty
B Cone	15 ½"	5 ¼"	2 ½"	10 ½"	2 ¾" - 4"	25

Use:

IB Pipe Flashings are typically installed around roof top penetrations such as pipe, conduit, gas lines and other circular profile penetrations and flashings.

Colors:

White	Cool Sand	Cool Stone	Tan	Brown	Red	Green	Gray	Chemguard
-------	-----------	------------	-----	-------	-----	-------	------	-----------

C Cone



IB factory fabricated, dielectrically welded reinforced IB PVC Single-Ply base and a non-reinforced IB PVC Single-Ply upper. Designed for easy installation to reduce roof top labor and call backs by reducing workmanship errors.

Product No	Type	Color
4-CW-R	C Cone	White
4-CG-R	C Cone	Gray
4-CT-R	C Cone	Tan
4-CS-R	C Cone	Cool Sand
4-CSTO-R	C Cone	Cool Stone
4-CCGW-R	C Cone	ChemGuard
4-CB-R	C Cone	Brown
4-CR-R	C Cone	Red
4-CGRE-R	C Cone	Green

Pipe Flashing Specifications

Product	Base Flashing	Base	Top	Height	Pipe Size	Box Qty
C Cone	17 1/2"	8"	4"	10 1/2"	4" - 7 1/2"	10

Use:

IB Pipe Flashings are typically installed around roof top penetrations such as pipe, conduit, gas lines and other circular profile penetrations and flashings.

Colors:

White	Cool Sand	Cool Stone	Tan	Brown	Red	Green	Gray	Chemguard
-------	-----------	------------	-----	-------	-----	-------	------	-----------

D Cone



IB factory fabricated, dielectrically welded reinforced IB PVC Single-Ply base and a non-reinforced IB PVC Single-Ply upper. Designed for easy installation to reduce roof top labor and call backs by reducing workmanship errors.

Product No	Type	Color
4-DW-R	D Cone	White
4-DG-R	D Cone	Gray
4-DT-R	D Cone	Tan
4-DS-R	D Cone	Cool Sand
4-DSTO-R	D Cone	Cool Stone
4-DCGW-R	D Cone	ChemGuard
4-DB-R	D Cone	Brown
4-DR-R	D Cone	Red
4-DGRE-R	D Cone	Green

Pipe Flashing Specifications

Product	Base Flashing	Base	Top	Height	Pipe Size	Box Qty
D Cone	23"	12"	7 1/2"	9"	7 1/2" - 9 1/2"	10

Use:

IB Pipe Flashings are typically installed around roof top penetrations such as pipe, conduit, gas lines and other circular profile penetrations and flashings.

Colors:

White	Cool Sand	Cool Stone	Tan	Brown	Red	Green	Gray	Chemguard
-------	-----------	------------	-----	-------	-----	-------	------	-----------

E Cone



IB factory fabricated, dielectrically welded reinforced IB PVC Single-Ply base and a non-reinforced IB PVC Single-Ply upper. Designed for easy installation to reduce roof top labor and call backs by reducing workmanship errors.

Product No	Type	Color
4-EW-R	E Cone	White
4-EG-R	E Cone	Gray
4-ET-R	E Cone	Tan
4-ES-R	E Cone	Cool Sand
4-ESTO-R	E Cone	Cool Stone
4-ECGW-R	E Cone	ChemGuard
4-EB-R	E Cone	Brown
4-ER-R	E Cone	Red
4-EGRE-R	E Cone	Green

Pipe Flashing Specifications

Product	Base Flashing	Base	Top	Height	Pipe Size	Box Qty
E Cone	28"	18"	9 1/2"	12"	9 1/2" - 11 1/2"	10

Use:

IB Pipe Flashings are typically installed around roof top penetrations such as pipe, conduit, gas lines and other circular profile penetrations and flashings.

Colors:

White	Cool Sand	Cool Stone	Tan	Brown	Red	Green	Gray	Chemguard
-------	-----------	------------	-----	-------	-----	-------	------	-----------

0 to 5 Cone - 4"



IB factory fabricated, dielectrically welded reinforced IB PVC Single-Ply base and a non-reinforced IB PVC Single-Ply upper. Designed for easy installation to reduce roof top labor and call backs by reducing workmanship errors.

Product No	Type	Color
4-4025W-R	4" Cone	White
4-4025G-R	4" Cone	Gray
4-4025T-R	4" Cone	Tan
4-4025S-R	4" Cone	Cool Sand
4-4025STO-R	4" Cone	Cool Stone
4-4025CGW-R	4" Cone	ChemGuard
4-4025BRN-R	4" Cone	Brown
4-4025R-R	4" Cone	Red
4-4025GRN-R	4" Cone	Green

Pipe Flashing Specifications

Product	Base	Height	Qty
4" Round Cone	21"	5"	25

Colors:

White	Cool Sand	Cool Stone	Tan	Brown	Red	Green	Gray	Chemguard
-------	-----------	------------	-----	-------	-----	-------	------	-----------

FLASHINGS & VENTS

0 to 5 Cone - 6"



IB factory fabricated, dielectrically welded reinforced IB PVC Single-Ply base and a non-reinforced IB PVC Single-Ply upper. Designed for easy installation to reduce roof top labor and call backs by reducing workmanship errors.

Product No	Type	Color
4-6025W-R	6" Cone	White
4-6025G-R	6" Cone	Gray
4-6025T-R	6" Cone	Tan
4-6025S-R	6" Cone	Cool Sand
4-6025STO-R	6" Cone	Cool Stone
4-6025CGW-R	6" Cone	ChemGuard
4-6025BRN-R	6" Cone	Brown
4-6025R-R	6" Cone	Red
4-6025GRN-R	6" Cone	Green

Pipe Flashing Specifications

Product	Base	Height	Qty
6" Round Cone	24"	5"	25

Colors:

White	Cool Sand	Cool Stone	Tan	Brown	Red	Green	Gray	Chemguard
-------	-----------	------------	-----	-------	-----	-------	------	-----------

0 to 5 Cone - 8"



IB factory fabricated, dielectrically welded reinforced IB PVC Single-Ply base and a non-reinforced IB PVC Single-Ply upper. Designed for easy installation to reduce roof top labor and call backs by reducing workmanship errors.

Product No	Type	Color
4-8025W-R	8" Cone	White
4-8025G-R	8" Cone	Gray
4-8025T-R	8" Cone	Tan
4-8025S-R	8" Cone	Cool Sand
4-8025STO-R	8" Cone	Cool Stone
4-8025CGW-R	8" Cone	ChemGuard
4-8025BRN-R	8" Cone	Brown
4-8025R-R	8" Cone	Red
4-8025GRN-R	8" Cone	Green

Pipe Flashing Specifications

Product	Base	Height	Qty
8" Round Cone	26"	6 1/2"	25

Use:

IB Pipe Flashings are typically installed around roof top penetrations such as pipe, conduit, gas lines and other circular profile penetrations and flashings.

Colors:

White	Cool Sand	Cool Stone	Tan	Brown	Red	Green	Gray	Chemguard
-------	-----------	------------	-----	-------	-----	-------	------	-----------

Oval 0 to 5 Cone - 4"



IB factory fabricated, dielectrically welded reinforced IB PVC Single-Ply base and a non-reinforced IB PVC Single-Ply upper. Designed for easy installation to reduce roof top labor and call backs by reducing workmanship errors.

Product No	Type	Color
4-4OV025W-R	4" Oval Cone	White
4-4OV025G-R	4" Oval Cone	Gray
4-4OV025T-R	4" Oval Cone	Tan
4-4OV025S-R	4" Oval Cone	Cool Sand
4-4OV025STO-R	4" Oval Cone	Cool Stone
4-4OV025CGW-R	4" Oval Cone	ChemGuard
4-4OV025BRN-R	4" Oval Cone	Brown
4-4OV025R-R	4" Oval Cone	Red
4-4OV025GRN-R	4" Oval Cone	Green

Pipe Flashing Specifications

Product	Base Flashing	Base	Top	Height	Box Qty
4" Oval Cone	22"	6" x 10"	3" x 6"	5"	25

Use:

IB Pipe Flashings are typically installed around roof top penetrations such as pipe, conduit, gas lines and other circular profile penetrations and flashings.

Colors:

White	Cool Sand	Cool Stone	Tan	Brown	Red	Green	Gray	Chemguard
-------	-----------	------------	-----	-------	-----	-------	------	-----------

Non-Reinforced Detail Flashing Roll



Fabricated from a non-reinforced IB PVC Single-Ply Membrane. It is utilized for detail work which requires a flexible, easy to install membrane.

Product No	Type	Color
1-60WGNRF	60 Mil Roll	White
1-45BNZNRF	45 Mil Roll	Bronze
1-60GNRF	60 Mil Roll	Gray
1-60TNRF	60 Mil Roll	Tan
1-60SNRF	60 Mil Roll	Cool Sand
1-60STONRF	60 Mil Roll	Cool Stone
1-60BRNNRF	60 Mil Roll	Brown
1-60RNR	60 Mil Roll	Red
1-60GRNNRF	60 Mil Roll	Green

Packaging:

Size	Thickness	Weight (lbs)	Pallet
1' x 22'	60 Mil	110	

Use:

IB N.R. Detail Flashing Rolls are used in a variety of IB Construction Details and in difficult to flash areas such as at canted corners, field wrapped penetrations and detailing joints in IB PVC Clad metal flashings.

Colors:

White	Cool Sand	Cool Stone	Tan	Brown	Red	Green	Gray	Chemguard
-------	-----------	------------	-----	-------	-----	-------	------	-----------

FLASHINGS & VENTS

Round T-Joint Patch



Generally used to patch T-joints (mandatory on 80 mil projects).

Product No	Type	Color
4-RP50W	T-Joint Patch	White
4-RP50G	T-Joint Patch	Gray
4-RP50T	T-Joint Patch	Tan
4-RP50S	T-Joint Patch	Cool Sand
4-RP50STO	T-Joint Patch	Cool Stone
4-RP50CGW	T-Joint Patch	ChemGuard
4-RP50BRN	T-Joint Patch	Brown
4-RP50R	T-Joint Patch	Red
4-RP50GRN	T-Joint Patch	Green

Packaging:

Size	Thickness	Weight (lbs)	Pack
5"	80 Mil	3.5	50

Colors:

White	Cool Sand	Cool Stone	Tan	Brown	Red	Green	Gray	Chemguard
-------	-----------	------------	-----	-------	-----	-------	------	-----------

Inside Corner



Fabricated from 60 mil, non-reinforced IB PVC Single-Ply for easy installation to reduce roof top labor and call backs by reducing workmanship errors. Designed for non-canted 90° inside corners.

Product No	Type	Color
4-MICW	Molded Inside Corner	White
4-MICG	Molded Inside Corner	Gray
4-MICT	Molded Inside Corner	Tan
4-MICS	Molded Inside Corner	Cool Sand
4-MICB	Molded Inside Corner	Brown
4-ICB	Inside Corner	Brown
4-ICSTO	Inside Corner	Cool Stone
4-ICGRE	Inside Corner	Green
4-ICR	Inside Corner	Red
4-ICGDS	Inside Corner	DeckShield Gray
4-ICTDS	Inside Corner	DeckShield Tan

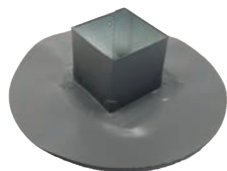
Specifications

Type of Corner	Height	Width
Inside Corner	5"	5"

Colors:

White	Cool Sand	Cool Stone	Tan	Brown	Red	Green	Gray
-------	-----------	------------	-----	-------	-----	-------	------

IB Pitch Pan



Fabricated from IB PVC Clad Metal constructed with durable 45 mil non-reinforced IB PVC film laminated to 24 gauge, G90 coated galvanized sheet metal.

Product No	Type	Color
4-PP4	4" Pitch Pan	White
4-PP6	6" Pitch Pan	White
4-PP8	8" Pitch Pan	White

Feature:

- Split pan format for ease of installation
- Factory welded reinforced membrane target
- Integral flanges for securement
- Custom orders available for a variety of membrane thicknesses and color options

Colors:

White	Cool Sand	Cool Stone	Tan	Brown	Red	Green	Gray	Chemguard
-------	-----------	------------	-----	-------	-----	-------	------	-----------

Outside Corner



Fabricated from 60 mil, non-reinforced IB PVC Single-Ply for easy installation to reduce roof top labor and call backs by reducing workmanship errors. Designed for non-canted 90° outside corner details.

Product No	Type	Color
4-MOCW	Molded Outside Corner	White
4-MOCG	Molded Outside Corner	Gray
4-MOCT	Molded Outside Corner	Tan
4-MOCS	Molded Outside Corner	Cool Sand
4-MOCB	Molded Outside Corner	Brown
4-OCB	Outside Corner	Brown
4-OCSTO	Outside Corner	Cool Stone
4-OCGRE	Outside Corner	Green
4-OCR	Outside Corner	Red
4-OCGDS	Outside Corner	DeckShield Gray
4-OCTDS	Outside Corner	DeckShield Tan

Specifications

Type of Corner	Height	Width
Outside Corner	5"	5"

Colors:

White	Cool Sand	Cool Stone	Tan	Brown	Red	Green	Gray
-------	-----------	------------	-----	-------	-----	-------	------

FLASHINGS & VENTS

Universal Outside Corner



Fabricated from 60 mil, non-reinforced IB PV Single-Ply for easy installation to reduce roof top labor and call backs by reducing workmanship errors. Designed for use on canted or irregular outside corner details.

Product No	Type	Color
4-MUCW	Universal Corner	White

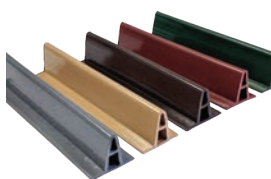
Specifications

Type of Corner	Height	Width
Universal Corner	7"	7"

Colors:

White

Flexible Metal Profile



IB Flexible Metal Profiles are specially designed to provide the aesthetic appeal of a standing seam metal roof.

Packaging:
35 per box

Weight:
2.0 LB per Profile (70lbs / box)

Product No	Type	Color
4-FMPG	Profile	Gray
4-FMPT	Profile	Tan
4-FMPR	Profile	Red
4-FMPGRN	Profile	Green
4-FMPBRN	Profile	Brown

Product Specs:

Flexible Metal Profiles are 10' feet in length Profile height is 1-1/8" Rib profile is 1/4" wide at top and 5/8" wide at base Base flange width is 1-3/8"

Use:

IB Flexible Metal Profiles are sold as accessory products used in conjunction with select IB PVC membranes.

Colors:

Tan Brown Red Green Gray

Foil Tape



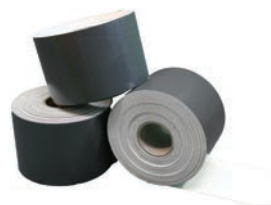
High-quality, high tensile strength aluminum foil coated in epoxy resin with strong, cold-weather solvent acrylic adhesive set on a easy-release silicone paper liner to preserve the adhesive and provide ease of use.

Product No	Type
2-FT2	2" Foil Tape

Packaging:

Size	Weight (lbs)	Pack
2" x 150'	1.5 per roll	individual rolls or 24 per box

IB Cover Strip



Fabricated from a polyester scrim reinforced, compounded PVC resin based sheet with plasticizers, stabilizers, fillers, pigments and other proprietary materials.

Product No	Type	Color
1-60CSW	60 Mil Cover Strip	White
1-60CSG	60 Mil Cover Strip	Gray
1-60CST	60 Mil Cover Strip	Tan
1-60CSS	60 Mil Cover Strip	Cool Sand
1-60CSSTO	60 Mil Cover Strip	Cool Stone
1-80CSW	80 Mil Cover Strip	White
1-80CSG	80 Mil Cover Strip	Gray
1-80CSBRN	80 Mil Cover Strip	Brown
1-80CST	80 Mil Cover Strip	Tan
1-50CSCGW	50 Mil Cover Strip	Chemguard White
1-80CSCGW	80 Mil Cover Strip	Chemguard White

Use:

- Flashing roll for stripping-in IB PVC Clad Metal Drip Edge, Gravel Stop and clad metal flashings
- Flashing roll used as a cover strip over mechanically fastened batten-bars; over intermediate termination bars or fastener rows on walls, and over supplemental exposed fastening rows at Perimeter and Corner roof zones
- Flashing roll for detailing IB PVC Single Ply Fleece back end laps

Packaging:

Size	Thickness
6" x 90'	50 Mil
6" x 90'	60 Mil
6" x 60'	80 Mil

Colors:

White Cool Sand Cool Stone Tan Brown Red Green Gray Chemguard

IB Non-Reinforced 5" X 8" Metal Joint Patch



Fabricated with a durable 45 mil non-reinforced IB PVC film with acrylic finish, laminated to 24 gauge, G90 galvanized sheet metal.

Product No	Type	Color
1-NRBJ	NR Metal Patch	White
1-NRBJG	NR Metal Patch	Gray
1-NRBJT	NR Metal Patch	Tan
1-NRBJ45BNZ	NR Metal Patch	Bronze

Packaging:

Size	Thickness	Weight (lbs)	Pack
5" x 8"	45 Mil	5 per pack 55 per box	50 per pack 10 packs per box

Colors:

White Tan Gray Bronze

FLASHINGS & VENTS

U-Anchor 1400



The U1400-PVC is a lightweight rooftop attachment system consisting of a U-Anchor 1000 Series plate and cover membrane. The cover membrane is factory sealed to the top of the plate.

Product No | Type

6-UA140038 | U-Anchor
 (Specify color when ordering)

Product Specs

Bolt - 3/8"-16 x 1.5" Attachment Bolt*
 Material Type: 304 Stainless Steel

Plate

Outer Diameter: 4.75"
 Fastener Hole Diameter: 0.236" (4 holes)
 Fastener Hole Pattern: 2.49" Diameter
 Material Thickness: 0.039"
 Material Type: Galvalume® AZ55

Membrane

Color: Default White*
 Length: 9.75"
 Width: 9.75"
 Thickness: Default 60 mil*

Colors:


U-Anchor 2000



The U-Anchor 2000-PVC is a lightweight rooftop attachment system consisting of a thermoplastic target membrane and a U-Anchor 2000 series plate.

Product No | Type

6-UA2000 | U-Anchor
 (Specify color when ordering)

Product Specs

Bolt - 3/8"-16 x 1.5" Bolt*
 Material Type: 304 Stainless Steel

Plate

Outer Diameter: 5-1/2"
 Fastener Hole Diameter: 17/64" (8 holes)
 Fastener Hole Pattern: 4-1/8" Diameter
 Material Thickness: 0.047" (1.194mm)
 Material Type: Galvalume® AZ55

Membrane

Color: Default White*
 Length: 15.75"
 Width: 15.75"
 Thickness: Default 60 mil*

Colors:


U-Anchor 2400



The U2400-PVC is a lightweight rooftop attachment system consisting of a U-Anchor 2000 Series plate and cover membrane. The cover membrane is factory sealed to the top of the plate.

Product No | Type

6-UA2400W | U-Anchor
 6-UA2400S | U-Anchor
 6-UA2400STO | U-Anchor
 6-UA2400T | U-Anchor
 6-UA2400B | U-Anchor
 6-UA2400R | U-Anchor
 6-UA2400GRN | U-Anchor
 6-UA2400G | U-Anchor
 6-UA2400CGW | U-Anchor

Color

White
 Cool Sand
 Cool Stone
 Tan
 Brown
 Red
 Green
 Gray
 Chemguard White

Colors:

Product Specs

3/8"-16 x 1.5" Attachment Bolt*
 Material Type: 304 Stainless Steel

Plate

Outer Diameter: 5-1/2"
 Fastener Hole Diameter: 17/64" (8 holes)
 Fastener Hole Pattern: 4-1/8" Diameter
 Material Thickness: 0.047" (1.194mm)
 Material Type: Galvalume® AZ55
 Color: Default White*
 Length: 11.75"
 Width: 11.75"
 Thickness: Default 60 mil*

Packaging

Sold Individually / Full Box Quantity
Individual Weight:
 Approx. 0.75 lbs
Full Box Quantity:
 10 units
Box Weight:
 Approx. 10 lbs

FLASHINGS & VENTS

U-Anchor 3400



The U3400-PVC is attached by fastening through the roofing assembly into the structural decking with 2-12 approved fasteners. The membrane cover is then hot air welded around the perimeter to the roof membrane.

Product No | **Type**
6-UA3400 | U-Anchor
(Specify color when ordering)

Colors:



Product Specs

Fastener

3/8"-16 x 1.5" Attachment Bolt*
Material Type: 304 Stainless Steel

Plate

Dimensions: 11.08" x 5.47"
Fastener Hole Diameter: 17/64" (12 holes)
Material Thickness: 0.047" (1.194mm)
Material Type: Galvalume® AZ55

Membrane

Color: Default White*
Length: 17.5"
Width: 11.75"
Thickness: Default 60 mil*

Packaging

Sold Individually OR Full Box
Quantity
Individual Weight: Approx. 1.4 lbs
Full Box Quantity: 10 units
Box Weight: Approx. 14 lbs

U-Anchor 4400



The U4400-PVC is a lightweight rooftop attachment system consisting of a U-Anchor 4000 Series plate and cover membrane. The cover membrane is factory sealed to the top of the plate.

Product No | **Type**
6-UA440038 | U-Anchor
(Specify color when ordering)

Colors:



Product Specs

Fastener

3/8"-16 x 1.5" Attachment Bolt*
Material Type: 304 Stainless Steel

Plate

Outer Diameter: 14.267"
Inner Fastener Hole Pattern: 9.185" (8 holes)
Outer Fastener Hole Pattern: 13" (4 holes)
Material Thickness: 0.118"
Material Type: Galvalume® AZ55

Membrane

Color: Default White*
Length: 17.5"
Width: 17.5"
Thickness: Default 60 mil*

Packaging

Sold Individually OR Full Box
Quantity
Individual Weight: Approx. 4 lbs
Full Box Quantity: 4 units
Box Weight: Approx. 16 lbs

FLASHINGS & VENTS

E-Curb Kits - 6" Round

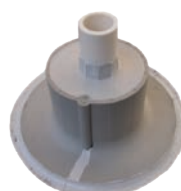


IB E-Curb System penetration seals replace old-style metal pitch pans with versatile precast components and pourable sealants. The E-Curb System can usually be installed in under 15 minutes and is available in convenient kits.

Product No | Type
4-ECURB6 | 6" Round Kit

Includes:
 M-1 & pourable sealant, 3 sets of bases  Requires ground shipping/additional shipping

E-Curb Kits - Universal

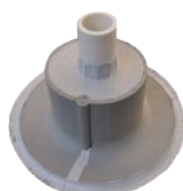


IB E-Curb System penetration seals replace old-style metal pitch pans with versatile precast components and pourable sealants. The E-Curb System can usually be installed in under 15 minutes and is available in convenient kits.

Product No | Type
4-EKIT | Universal Kit

Includes:
 M-1 & pourable sealant, 1 set of bases  Requires ground shipping/additional shipping

E-Curb Kits - 4" Round



IB E-Curb System penetration seals replace old-style metal pitch pans with versatile precast components and pourable sealants. The E-Curb System can usually be installed in under 15 minutes and is available in convenient kits.

Product No | Type
4-ECURB4 | 4" Round Kit

Includes:
 M-1 & pourable sealant, 4 sets of bases  Requires ground shipping/additional shipping

IB Recover Membrane Vent



Only available in two-way style. Made of Heavy Duty UV Stabilized PVC. Cap is permanently attached. An IB Membrane Target Patch is dielectrically welded to the flange.

Product No	Type	Color
5-05PVCW-R	5" Vent	White
5-05PVCG-R	5" Vent	Gray
5-05PVCT-R	5" Vent	Tan
5-05PVCS-R	5" Vent	Cool Sand
5-05PVCSTO-R	5" Vent	Cool Stone
5-05PVCCGW-R	5" Vent	ChemGuard
5-05PVCBRN-R	5" Vent	Brown
5-05PVCGRN-R	5" Vent	Green
5-05PVCR-R	5" Vent	Red

Note:

* IB Requires 1 for every 1,000 sq ft on mechanically attached and recover assemblies.

Colors:

White	Cool Sand	Cool Stone	Tan	Brown	Red	Green	Gray	Chemguard
-------	-----------	------------	-----	-------	-----	-------	------	-----------

White Vents:

Base - White, Cool Sand, Cool Stone

Gray Vents:

Base - Gray

Tan Vents:

Base - Tan

Black Vents:

Base - Brown, Red, Green

IB 8" Roof Vent



Super Heavy Duty UV Stabilized PVC with integral insect resistant scree. Deck flange includes pre-drilled holes for easy attachment to the roof deck. Cap is permanently attached to resist damage. Comes with an IB membrane target patch dielectrically welded to the flange. Net free ventilation area of 52 square inches per vent.

Product No	Type	Color
5-08PVCW-R	8" Vent	White
5-08PVCG-R	8" Vent	Gray
5-08PVCT-R	8" Vent	Tan
5-08PVCS-R	8" Vent	Cool Sand
5-08PVCSTO-R	8" Vent	Cool Stone
5-08PVCCGW-R	8" Vent	ChemGuard
5-08PVCBRN-R	8" Vent	Brown
5-08PVCGRN-R	8" Vent	Green
5-08PVCR-R	8" Vent	Red

Colors:

White	Cool Sand	Cool Stone	Tan	Brown	Red	Green	Gray	Chemguard
-------	-----------	------------	-----	-------	-----	-------	------	-----------

White Vents:

Base - White, Cool Sand, Cool Stone

Gray Vents:

Base - Gray

Tan Vents:

Base - Tan

Black Vents:

Base - Brown, Red, Green

FLASHINGS & VENTS

IB Dryer Vent / Exhaust Vent & Vent No-Cone



Heavy-duty metal two-piece general purpose roof exhaust vent consisting of a Kynar 500® finished vent hood shipped with a ready to install galvanized flanged metal base. It comes equipped with an integral clamping band for easy, quick installation over factory fabricated IB PVC no-cone flashings. Vent hood is removable as required for general maintenance or periodic cleaning.

Product No	Type	Color
5-04DEW	4" Vent & Hood	White

*Special Order

5-06DEW	6" Vent & Hood	White*
5-08DEW	8" Vent & Hood	White*

Product No	Type	Color
4-4DVW-R	4" No-Cone	White
4-4DVG-R	4" No-Cone	Gray
4-4DVT-R	4" No-Cone	Tan
4-4DVS-R	4" No-Cone	Cool Sand
4-4DVSTO-R	4" No-Cone	Cool Stone
4-4DVCGW-R	4" No-Cone	ChemGuard
4-4DVBRN-R	4" No-Cone	Brown
4-4DVR-R	4" No-Cone	Red
4-4DVGRN-R	4" No-Cone	Green

*Special Order

4-6DVW-R	6" No-Cone	White
4-6DVG-R	6" No-Cone	Gray
4-6DVT-R	6" No-Cone	Tan
4-6DVS-R	6" No-Cone	Cool Sand
4-6DCSTO-R	6" No-Cone	Cool Stone
4-6DVCG-R	6" No-Cone	ChemGuard
4-6DVBRN-R	6" No-Cone	Brown
4-6DVGRN-R	6" No-Cone	Green
4-6DVR-R	6" No-Cone	Red

4-8DVW-R	8" No-Cone	White
4-8DVG-R	8" No-Cone	Gray

Features:

- Built-in back draft dampers close when not in use
- Can be used for dryer, kitchen and bath exhaust vent
- 4" drop for easy connection to exhaust duct

Packaging:

One unit per box - includes vent hood, base, and optional screens for non-dryer use application

Colors:

White	Cool Sand	Cool Stone	Tan	Brown	Red	Green	Gray	Chemguard
-------	-----------	------------	-----	-------	-----	-------	------	-----------

DRAINS

2" IB Retrofit Drain & Target



Designed as an option for installation into various sized existing leader pipes. Constructed from a heavy-duty one-piece spun aluminum body with cast aluminum clamping rings. Factory applied IB retrofit drain target sheet for easy weldable application.

Product No	Type	Color
5-2RFDW-R	Drain Target	White
5-2RFDG-R	Drain Target	Gray
5-2RFDT-R	Drain Target	Tan
5-2RFDS-R	Drain Target	Cool Sand
5-2RFDSTO-R	Drain Target	Cool Stone
5-2RFDCGW-R	Drain Target	ChemGuard
5-2RFD BRN-R	Drain Target	Brown
5-2RFDR-R	Drain Target	Red
5-2RFDGRN-R	Drain Target	Green
5-2RFDTDS-R	Drain Target	DeckShield Tan
5-2RFDGDS-R	Drain Target	DeckShield Gray

Features:

- One-piece seamless heavy-duty body manufactured from 0.81 ga spun aluminum
- Extra large 16" diameter drain flange
- Factory applied and sealed reinforced 23" x 23" IB membrane target

Colors:

White	Cool Sand	Cool Stone	Tan	Brown	Red	Green	Gray	Chemguard
Deckshield Gray	Deckshield Tan							

4" IB Retrofit Drain & Target



Designed as an option for installation into various sized existing leader pipes. Constructed from a heavy-duty one-piece spun aluminum body with cast aluminum clamping rings. Factory applied IB retrofit drain target sheet for easy weldable application.

Product No	Type	Color
5-4RFDW-R	Drain Target	White
5-4RFDG-R	Drain Target	Gray
5-4RFDT-R	Drain Target	Tan
5-4RFDS-R	Drain Target	Cool Sand
5-4RFDSTO-R	Drain Target	Cool Stone
5-4RFDCGW-R	Drain Target	ChemGuard
5-4RFD BRN-R	Drain Target	Brown
5-4RFDR-R	Drain Target	Red
5-4RFDGRN-R	Drain Target	Green
5-4RFDTDS-R	Drain Target	DeckShield Tan
5-4RFDGDS-R	Drain Target	DeckShield Gray

Features:

- One-piece seamless heavy-duty body manufactured from 0.81 ga spun aluminum
- Extra large 16" diameter drain flange
- Factory applied and sealed reinforced 23" x 23" IB membrane target

Colors:

White	Cool Sand	Cool Stone	Tan	Brown	Red	Green	Gray	Chemguard
Deckshield Gray	Deckshield Tan							

3" IB Retrofit Drain & Target



Designed as an option for installation into various sized existing leader pipes. Constructed from a heavy-duty one-piece spun aluminum body with cast aluminum clamping rings. Factory applied IB retrofit drain target sheet for easy weldable application.

Product No	Type	Color
5-3RFDW-R	Drain Target	White
5-3RFDG-R	Drain Target	Gray
5-3RFDT-R	Drain Target	Tan
5-3RFDS-R	Drain Target	Cool Sand
5-3RFDSTO-R	Drain Target	Cool Stone
5-3RFDCGW-R	Drain Target	ChemGuard
5-3RFD BRN-R	Drain Target	Brown
5-3RFDR-R	Drain Target	Red
5-3RFDGRN-R	Drain Target	Green
5-3RFDTDS-R	Drain Target	DeckShield Tan
5-3RFDGDS-R	Drain Target	DeckShield Gray

Features:

- One-piece seamless heavy-duty body manufactured from 0.81 ga spun aluminum
- Extra large 16" diameter drain flange
- Factory applied and sealed reinforced 23" x 23" IB membrane target

Colors:

White	Cool Sand	Cool Stone	Tan	Brown	Red	Green	Gray	Chemguard
Deckshield Gray	Deckshield Tan							

5" IB Retrofit Drain & Target



Designed as an option for installation into various sized existing leader pipes. Constructed from a heavy-duty one-piece spun aluminum body with cast aluminum clamping rings. Factory applied IB retrofit drain target sheet for easy weldable application.

Product No	Type	Color
5-5RFDW-R	Drain Target	White
5-5RFDG-R	Drain Target	Gray
5-5RFDT-R	Drain Target	Tan
5-5RFDS-R	Drain Target	Cool Sand
5-5RFDSTO-R	Drain Target	Cool Stone
5-5RFDCGW-R	Drain Target	ChemGuard
5-5RFD BRN-R	Drain Target	Brown
5-5RFDR-R	Drain Target	Red
5-5RFDGRN-R	Drain Target	Green
5-5RFDTDS-R	Drain Target	DeckShield Tan
5-5RFDGDS-R	Drain Target	DeckShield Gray

Features:

- One-piece seamless heavy-duty body manufactured from 0.81 ga spun aluminum
- Extra large 16" diameter drain flange
- Factory applied and sealed reinforced 23" x 23" IB membrane target

Colors:

White	Cool Sand	Cool Stone	Tan	Brown	Red	Green	Gray	Chemguard
Deckshield Gray	Deckshield Tan							

DRAINS

6" IB Retrofit Drain & Target



Designed as an option for installation into various sized existing leader pipes. Constructed from a heavy-duty one-piece spun aluminum body with cast aluminum clamping rings. Factory applied IB retrofit drain target sheet for easy weldable application.

Product No	Type	Color
5-6RFDW-R	Drain Target	White
5-6RFDG-R	Drain Target	Gray
5-6RFDT-R	Drain Target	Tan
5-6RFDG-R	Drain Target	Cool Sand
5-6RFDSTO-R	Drain Target	Cool Stone
5-6RFDG-R	Drain Target	ChemGuard
5-6RFDG-R	Drain Target	Brown
5-6RFDG-R	Drain Target	Red
5-6RFDG-R	Drain Target	Green
5-6RFDG-R	Drain Target	DeckShield Tan
5-6RFDG-R	Drain Target	DeckShield Gray

Features:

- One-piece seamless heavy-duty body manufactured from 0.81 ga spun aluminum
- Extra large 16" diameter drain flange
- Factory applied and sealed reinforced 23" x 23" IB membrane target

Colors:

White	Cool Sand	Cool Stone	Tan	Brown	Red	Green	Gray	Chemguard
Deckshield Gray	Deckshield Tan							

3" IB Retrofit Overflow Drain & Target



Designed as an option for installation into various sized existing leader pipes. Constructed from a heavy-duty one-piece spun aluminum body with cast aluminum clamping rings. Factory applied IB retrofit drain target sheet for easy weldable application.

Product No	Type	Color
5-3ROFDW-R	Drain Target	White
5-3ROFDG-R	Drain Target	Gray
5-3ROFDT-R	Drain Target	Tan
5-3ROFDG-R	Drain Target	Cool Sand
5-3ROFDSTO-R	Drain Target	Cool Stone
5-3ROFDG-R	Drain Target	ChemGuard
5-3ROFDG-R	Drain Target	Brown
5-3ROFDG-R	Drain Target	Red
5-3ROFDG-R	Drain Target	Green
5-3ROFDG-R	Drain Target	DeckShield Tan
5-3ROFDG-R	Drain Target	DeckShield Gray

Features:

- One-piece seamless heavy-duty body manufactured from 0.81 ga spun aluminum
- Extra large 16" diameter drain flange
- Factory applied and sealed reinforced 23" x 23" IB membrane target

Colors:

White	Cool Sand	Cool Stone	Tan	Brown	Red	Green	Gray	Chemguard
Deckshield Gray	Deckshield Tan							

2" IB Retrofit Overflow Drain & Target



Designed as an option for installation into various sized existing leader pipes. Constructed from a heavy-duty one-piece spun aluminum body with cast aluminum clamping rings. Factory applied IB retrofit drain target sheet for easy weldable application.

Product No	Type	Color
5-2ROFDW-R	Drain Target	White
5-2ROFDG-R	Drain Target	Gray
5-2ROFDT-R	Drain Target	Tan
5-2ROFDG-R	Drain Target	Cool Sand
5-2ROFDSTO-R	Drain Target	Cool Stone
5-2ROFDG-R	Drain Target	ChemGuard
5-2ROFDG-R	Drain Target	Brown
5-2ROFDG-R	Drain Target	Red
5-2ROFDG-R	Drain Target	Green
5-2ROFDG-R	Drain Target	DeckShield Tan
5-2ROFDG-R	Drain Target	DeckShield Gray

Features:

- One-piece seamless heavy-duty body manufactured from 0.81 ga spun aluminum
- Extra large 16" diameter drain flange
- Factory applied and sealed reinforced 23" x 23" IB membrane target
- 2" drain comes with a 2" wide band of high density expanding foam tape in place of the ProSeal rubber seal

Colors:

White	Cool Sand	Cool Stone	Tan	Brown	Red	Green	Gray	Chemguard
Deckshield Gray	Deckshield Tan							

4" IB Retrofit Overflow Drain & Target



Designed as an option for installation into various sized existing leader pipes. Constructed from a heavy-duty one-piece spun aluminum body with cast aluminum clamping rings. Factory applied IB retrofit drain target sheet for easy weldable application.

Product No	Type	Color
5-4RFDW-R	Drain Target	White
5-4RFDG-R	Drain Target	Gray
5-4RFDT-R	Drain Target	Tan
5-4RFDG-R	Drain Target	Cool Sand
5-4RFDSTO-R	Drain Target	Cool Stone
5-4RFDG-R	Drain Target	ChemGuard
5-4RFDG-R	Drain Target	Brown
5-4RFDG-R	Drain Target	Red
5-4RFDG-R	Drain Target	Green
5-4RFDG-R	Drain Target	DeckShield Tan
5-4RFDG-R	Drain Target	DeckShield Gray

Features:

- One-piece seamless heavy-duty body manufactured from 0.81 ga spun aluminum
- Extra large 16" diameter drain flange
- Factory applied and sealed reinforced 23" x 23" IB membrane target

Colors:

White	Cool Sand	Cool Stone	Tan	Brown	Red	Green	Gray	Chemguard
Deckshield Gray	Deckshield Tan							

DRAINS

5" IB Retrofit Overflow Drain & Target



Designed as an option for installation into various sized existing leader pipes. Constructed from a heavy-duty one-piece spun aluminum body with cast aluminum clamping rings. Factory applied IB retrofit drain target sheet for easy weldable application.

Product No	Type	Color
5-5ROFDW-R	Drain Target	White
5-5ROFDG-R	Drain Target	Gray
5-5ROFDT-R	Drain Target	Tan
5-5ROFDS-R	Drain Target	Cool Sand
5-5ROFDSTO-R	Drain Target	Cool Stone
5-5ROFDCGW-R	Drain Target	ChemGuard
5-5ROFDBRN-R	Drain Target	Brown
5-5ROFDR-R	Drain Target	Red
5-5ROFDGRN-R	Drain Target	Green
5-5ROFDTDS-R	Drain Target	DeckShield Tan
5-5ROFDGDS-R	Drain Target	DeckShield Gray

Features:

- One-piece seamless heavy-duty body manufactured from 0.81 ga spun aluminum
- Extra large 16" diameter drain flange
- Factory applied and sealed reinforced 23" x 23" IB membrane target

Colors:

White	Cool Sand	Cool Stone	Tan	Brown	Red	Green	Gray	Chemguard
Deckshield Gray	Deckshield Tan							

6" IB Retrofit Overflow Drain & Target



Designed as an option for installation into various sized existing leader pipes. Constructed from a heavy-duty one-piece spun aluminum body with cast aluminum clamping rings. Factory applied IB retrofit drain target sheet for easy weldable application.

Product No	Type	Color
5-6ROFDW-R	Drain Target	White
5-6ROFDG-R	Drain Target	Gray
5-6ROFDT-R	Drain Target	Tan
5-6ROFDS-R	Drain Target	Cool Sand
5-6ROFDSTO-R	Drain Target	Cool Stone
5-6ROFDCGW-R	Drain Target	ChemGuard
5-6ROFDBRN-R	Drain Target	Brown
5-6ROFDR-R	Drain Target	Red
5-6ROFDGRN-R	Drain Target	Green
5-6ROFDTDS-R	Drain Target	DeckShield Tan
5-6ROFDGDS-R	Drain Target	DeckShield Gray

Features:

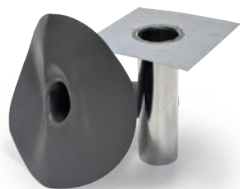
- One-piece seamless heavy-duty body manufactured from 0.81 ga spun aluminum
- Extra large 16" diameter drain flange
- Factory applied and sealed reinforced 23" x 23" IB membrane target

Colors:

White	Cool Sand	Cool Stone	Tan	Brown	Red	Green	Gray	Chemguard
Deckshield Gray	Deckshield Tan							

DRAINS

2" IB Drain Liner & Drop Scupper



Fabricated with round straight tube leaders and a reinforced IB PVC Single-Ply target flashing that allows for easy application.

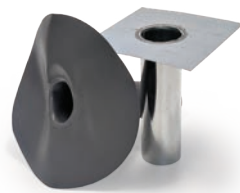
Product No	Type	Color
5-DS2	2" Drop Scupper	

5-DL2W-R	2" Drain Liner	White
5-DL2G-R	2" Drain Liner	Gray
5-DL2T-R	2" Drain Liner	Tan
5-DL2S-R	2" Drain Liner	Cool Sand
5-DL2STO-R	2" Drain Liner	Cool Stone
5-DL2CGW-R	2" Drain Liner	ChemGuard
5-DL2BRN-R	2" Drain Liner	Brown
5-DL2GRN-R	2" Drain Liner	Green
5-DL2R-R	2" Drain Liner	Red
5-DL2GDS-R	2" Drain Liner	DeckShield Gray
5-DL2TDS-R	2" Drain Liner	DeckShield Tan

Colors:



3" IB Drain Liner & Drop Scupper



Fabricated with round straight tube leaders and a reinforced IB PVC Single-Ply target flashing that allows for easy application.

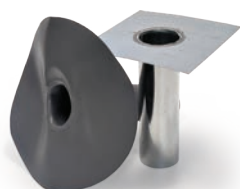
Product No	Type	Color
5-DS3	3" Drop Scupper	

5-DL3W-R	3" Drain Liner	White
5-DL3G-R	3" Drain Liner	Gray
5-DL3T-R	3" Drain Liner	Tan
5-DL3S-R	3" Drain Liner	Cool Sand
5-DL3STO-R	3" Drain Liner	Cool Stone
5-DL3CGW-R	3" Drain Liner	ChemGuard
5-DL3BRN-R	3" Drain Liner	Brown
5-DL3GRN-R	3" Drain Liner	Green
5-DL3R-R	3" Drain Liner	Red
5-DL3GDS-R	3" Drain Liner	DeckShield Gray
5-DL3TDS-R	3" Drain Liner	DeckShield Tan

Colors:



4" IB Drain Liner & Drop Scupper

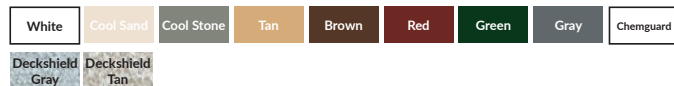


Fabricated with round straight tube leaders and a reinforced IB PVC Single-Ply target flashing that allows for easy application.

Product No	Type	Color
5-DS4	4" Drop Scupper	

5-DL4W-R	4" Drain Liner	White
5-DL4G-R	4" Drain Liner	Gray
5-DL4T-R	4" Drain Liner	Tan
5-DL4S-R	4" Drain Liner	Cool Sand
5-DL4STO-R	4" Drain Liner	Cool Stone
5-DL4CGW-R	4" Drain Liner	ChemGuard
5-DL4BRN-R	4" Drain Liner	Brown
5-DL4GRN-R	4" Drain Liner	Green
5-DL4R-R	4" Drain Liner	Red
5-DL4GDS-R	4" Drain Liner	DeckShield Gray
5-DL4TDS-R	4" Drain Liner	DeckShield Tan

Colors:



METALS

IB Clad Drip Edge Metal



Fabricated with a durable 45 mil non-reinforced IB PVC film with acrylic finish, laminated to 24 gauge, G90 galvanized sheet metal. Formed into standard metal drip edge profile with a hemmed kick-out at the bottom to provide a corrosion resistant, heat-weldable perimeter roof edge termination.

Product No	Type	Color
2-2.5DEKO	2.5" Drip Edge	White
2-B2.5DEKO	2.5" Drip Edge	Bronze
2-T2.5DEKO	2.5" Drip Edge	Tan
2-G2.5DEKO	2.5" Drip Edge	Gray
2-4DEKO	4" Drip Edge	White
2-B4DEKO	4" Drip Edge	Bronze
2-T4DEKO	4" Drip Edge	Tan
2-G4DEKO	4" Drip Edge	Gray

Custom sizes available - Special Order

Colors:



IB Clad Gravel Stop Metal



Fabricated with a durable 45 mil non-reinforced IB PVC film with acrylic finish, laminated to 24 gauge, G90 galvanized sheet metal. Formed into a gravel stop edge profile with 3/4" rise and a hemmed kick-out at the bottom to provide a corrosion resistant, heat-weldable perimeter roof edge termination.

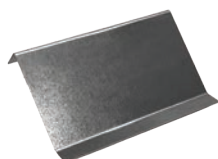
Product No	Type	Color
2-2.5GSKO	2.5" Gravel Stop	White
2-B2.5GSKO	2.5" Gravel Stop	Bronze
2-T2.5GSKO	2.5" Gravel Stop	Tan
2-G2.5GSKO	2.5" Gravel Stop	Gray
2-4GSKO	4" Gravel Stop	White
2-B4GSKO	4" Gravel Stop	Bronze
2-T4GSKO	4" Gravel Stop	Tan
2-G4GSKO	4" Gravel Stop	Gray

Custom sizes available - Special Order

Colors:



IB Metal Cleat



Assembly consists of IB Clad Drip Edge formed into a metal profile to provide a clean, durable edge termination with a hemmed kick-out designed for use with continuous metal cleats.

Product No	Type
2-2.5GALCLEAT	2.5" Galvanized Cleat
2-4GALVCLEAT	4" Galvanized Cleat

IB Clad Drip Edge Stainless Steel Metal



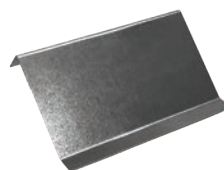
Fabricated with a durable 45 mil non-reinforced IB PVC film with acrylic finish, laminated to 24 gauge, 304 Stainless Steel sheet metal. It is formed into standard metal drip edge profile with a hemmed kick-out at the bottom to provide a corrosion resistant, heat-weldable perimeter roof edge termination.

Product No	Type	Color
2-SS2.5DEKO	2.5" SS Drip Edge	White
2-SS4DEKO	4" SS Drip Edge	White

Colors:

White

IB Stainless Steel Cleat



Assembly consists of a stainless steel IB Clad Drip Edge formed into a metal profile to provide a clean, durable edge termination with a hemmed kick-out designed for use with continuous metal cleats.

Product No	Type
2-2.5SSCLEAT	2.5" Stainless Cleat
2-4SSCLEAT	4" Stainless Cleat

IB Clad Gravel Stop Stainless Steel Metal



Fabricated with a durable 45 mil non-reinforced IB PVC film with acrylic finish, laminated to 24 gauge, 304 Stainless Steel sheet metal. It is formed into a gravel stop edge profile with 3/4" rise and a hemmed kick-out at the bottom to provide a corrosion resistant, heat-weldable perimeter roof edge termination.

Product No	Type	Color
2-SS2.5GSKO	2.5" SS Gravel Stop	White
2-SS4GSKO	4" SS Gravel Stop	White

Colors:

White

IB Aluminum Termination Bar



Designed to terminate Single-Ply membrane to parapet walls and other penetrations.

Product No	Type
2-8TBALUM	1" Aluminum Term Bar

Features:

- Made of extruded aluminum with a mill finish
- Oval holes that measure 1/4" x 3/8" are punched into each bar, with a standard spacing of 6", 8", or 12" on center
- Can be made to order with special hole spacing

METALS

IB Clad Termination Bar



Fabricated from 24 gauge, G90 galvanized sheet metal with a durable 45 mil non-reinforced IB PVC film with acrylic finish laminated to the top surface. Bars are 2" wide with a hemmed caulk lip on the top and a hemmed bottom edge and can be installed over membrane flashings at vertical surfaces.

Product No	Type	Color
2-8TBPVC	2" KO Clad Term Bar	White
2-T8TBPVC	2" KO Clad Term Bar	Tan
2-G8TBPVC	2" Clad Term Bar	Gray
2-B8TBPVC	2" Clad Term Bar	Bronze
2-8SSTBPVC	2" SS Clad Term Bar	White

Features:

- Durable 45 mil IB PVC non-reinforced film laminated to metal
- Acrylic finish top surface
- Installed either on top or underneath the roofing membrane

Packaging:

Sold as individual sections
50 pieces / box
4 lbs / piece

Colors:



IB Snap Fascia



Two part assembly with a raised rigid retainer/clip base plate and a raised decorative, snap on facing cover designed for terminating Single-Ply roofing systems at the perimeter edges, or for vertically terminating Single-Ply base flashing.

24 Gauge 2.5"

Product No	Type	Color
2-SFW	Snap Fascia	White
2-SFG	Snap Fascia	Gray
2-SFT	Snap Fascia	Tan
2-SFB	Snap Fascia	Bronze

Features:

- Can be used as an edge termination like an edge, rake, or ridge metal can be used as a surface mounted counter flashing for vertical base flashing applications
- Design allows for a dual sealant termination by providing a continuous positive pressure compression of the roofing membrane to the underlying structure
- Optional Kynar 500 coated formed raised aluminum finishes and thickness'

Colors:



AnchorTite® Drip Edge



The patented extruded aluminum anchor bar securely terminates the IB PVC membrane, providing protection superior to any other manufactured or shopfabricated roof edge. The low profile roofing flange allows for water drainage as needed for drip edge conditions.

Product No	Size
2-AT3	3"
2-AT4.5	4.5"
2-AT6	6"

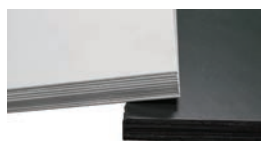
Features:

- 12' lengths with pre-punched holes for quicker installation.
- Covers available in 24 ga. steel and .040 aluminum
- Radiused and specially fabricated options available
- A 30 year Kynar 500® finish warranty is included on coil-coated standard colors.

Colors:



IB PVC Clad Metal 4x10 Sheet



Fabricated from 24 gauge, G90 galvanized sheet metal with a durable 45 mil non-reinforced IB PVC film with acrylic finish laminated to the top surface.

Product No	Type	Color
2-45CM	Clad Metal	White
2-95SS	SS Clad Metal	White
2-B45CM	Clad Metal	Bronze
2-T45CM	Clad Metal	Tan
2-G45CM	Clad Metal	Gray

Features:

- Durable 45 mil IB PVC non-reinforced film laminated to metal
- Acrylic finish top surface
- Easily fabricated into various profiles and flashings

Packaging:

Sold as individual sheets 4x10
50 sheets / pallet
53 lbs / sheet

Colors:



CUSTOMS

CUSTOM POST FLASHING



Custom post flashing made from IB PVC and metal.

To price this product, measure and add the **Length + Width + Height**. Total inches equals the size of small, medium, Large or Extra-Large.

Post Flashing 0-30" (small)

Product No	Size (inches)
C-PFSM / C-80PFSM	0-30

Post Flashing 31-42" (medium)

Product No	Size (inches)
C-PFMD / C-80PFMD	31-42

Colors:



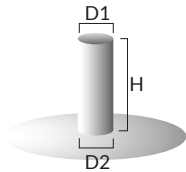
Post Flashing 43-50" (large)

Product No	Size (inches)
C-PFLG / C-80PFLG	43-50

Post Flashing 51"+ (extra large)

Product No	Size (inches)
C-PFXL / C-80PFXL	51+

CUSTOM CONE FLASHINGS



Custom No Cone made from IB PVC

To price this product, measure and add the **D1 + D2 + Height**. Total inches equals the size of small, medium, Large or Extra-Large.

Custom Cones 0-18" (small)

Product No	Size (inches)
C-CSM / C-80CSM	0-18

Custom Cones 19-27" (medium)

Product No	Size (inches)
C-CM / C-80CM	19-27

Colors:



Custom Cones 28-34" (large)

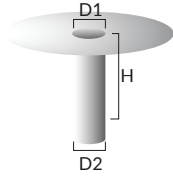
Product No	Size (inches)
C-CLG / C-80CLG	28-34

Custom Cones 35" + (extra large)

Product No	Size (inches)
C-CXL / C-80CXL	35+

CUSTOMS

CUSTOM DRAIN LINER



Custom Drain Liner made from IB PVC

To price this product, measure and add the **D1 + D2 + Height**. Total inches equals the size of small, medium, Large or Extra-Large.

Custom Drain Liner

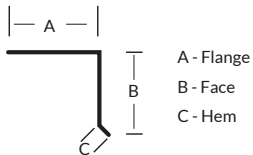
Product No | Size (inches)
 C-DL / C-80DL | 0-8

Colors:



CUSTOM CLAD METALS

DRIP EDGE



Fabricated from 24 gauge, G90 galvanized sheet metal with a durable 45 mil non-reinforced IB PVC film with acrylic finish laminated to the top surface.

To price this product, measure the total number of inches as if it was flat (Stretch out) A+B+C. Multiply the price of the metal by the inch. Add \$1 per bend in the metal for the total price per piece.

Stretch out X price per inch + number of bends.

*Indicate Kick-out/Kick-in

Custom PVC Clad Metal (small)

Product No | Size (inches)
 C-MSM | 0-18

Custom PVC Clad Metal (medium)

Product No | Size (inches)
 C-MM | 19-27

Colors:



Custom PVC Clad Metal (large)

Product No | Size (inches)
 C-MLG | 28-34

Custom PVC Clad Metal (extra large)

Product No | Size (inches)
 C-MLX | 34+

CUSTOM CLAD STAINLESS METALS

Custom PVC Clad Stainless Metal (small)

Product No | Size (inches)
 C-MSSSM | 0-18

Custom PVC Clad Stainless Metal (medium)

Product No | Size (inches)
 C-MSSMD | 19-27

Colors:



Custom PVC Clad Stainless Metal (large)

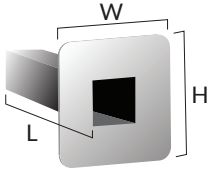
Product No | Size (inches)
 C-MSSLG | 28-34

Custom PVC Clad Stainless Metal (extra large)

Product No | Size (inches)
 C-MSSXL | 34+

CUSTOMS

CUSTOM OVERFLOW SCUPPER



Custom overflow scupper made from IB PVC and metal

To price this product, measure and multiply the **Length + Width + Height**. Total inches equals the size of small, medium, Large or Extra-Large.

Custom Overflow Scupper 0-20" (small)

Product No	Size (inches)
C--OFSSM	0-20
C-80OFSSM	

Custom Overflow Scupper 21-30" (medium)

Product No	Size (inches)
C-OFSMD / C-80OFSMD	21-30

Colors:

White	Cool Sand	Cool Stone	Tan	Brown	Red	Green	Gray	Chemguard
-------	-----------	------------	-----	-------	-----	-------	------	-----------

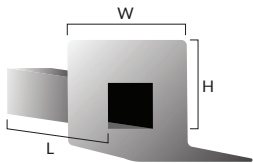
Custom Overflow Scupper 31-40" (large)

Product No	Size (inches)
C-OFSLG / C-80OFSLG	31-40

Custom Overflow Scupper 41"+ (extra large)

Product No	Size (inches)
C-OFSXL / C-80OFSXL	41+

CUSTOM THROUGH WALL SCUPPER



Custom through wall scupper made from IB PVC and metal

To price this product, measure and multiply the **Length + Width + Height**. Total inches equals the size of small, medium, Large or Extra-Large.

Custom Through Wall Scupper (small)

Product No	Size (inches)
C-TWSSM / C-80TWSSM	0-30

Custom Through Wall Scupper (medium)

Product No	Size (inches)
C-TWMD / C-80TWMD	31-42

Colors:

White	Cool Sand	Cool Stone	Tan	Brown	Red	Green	Gray	Chemguard
-------	-----------	------------	-----	-------	-----	-------	------	-----------

Custom Through Wall Scupper (large)

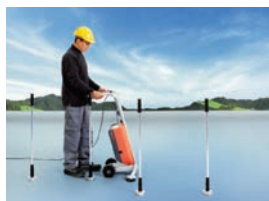
Product No	Size (inches)
C-TWSLG / C-80TWSLG	43-50

Custom Through Wall Scupper (extra large)

Product No	Size (inches)
C-TWSXL / C-80TWSXL	51+

TOOLS

isoweld® Tool with 6 Magnets



New, revolutionary SFS Intec isoweld® field fastening system is an innovative induction welding system which welds prefastened PVC coated securement plates to IB PVC Single Ply membranes.

Product No | **Type**
8-ISOWELD | welding system

Features:

- 1-step calibration
- Hand-held inductor
- Constant monitoring of membrane surface temperature
- "x2" welding - two membrane thickness
- 3-way weld verification
- Plate-finding search function
- No "false positive" welds

isoweld® Backpack Tool with 6 Magnets



A power generator that is interchangeable with the isoweld® 3000 stand-up tool frame, replaceable closed cell foam shoulder straps with integral waist strap, and the original low profile hand-held inductor for detail work which converts to stand-up mode for ultimate productivity.

Product No | **Type**
8-ISOPACK | backpack welding system

Features:

- Fastening is independent of membrane laps.
- Only one membrane width is required for the whole project
- No membrane penetration
- Reduced membrane overlaps
- Covering of the roof is independent of the fastening process and is therefore faster
- Fewer fastening points

Leister V2 Varimat Auto Welder w/Case



Roofing membranes can be welded faster, resulting in lower costs. Users appreciate its streamlined ergonomics and its ease of use. The operating unit's digital display allows for the control of temperature, airflow and speed.

Product No | **Type**
8-AMV2 | V2 Automatic Welder

Features:

- Slim-line design for welding in gaps as narrow as 4.3 inches
- Maintenance-free blower, no carbon brushes to replace
- User-friendly digital display that includes preset and configurable welding profiles for heat, speed and air volume
- Closed-loop system for continuous temperature monitoring
- Patented pendulum pressure roller applies pressure to the heated seam
- Drive motor strong enough to weld up to 30° slopes

Leister 120V Uniroof AT w/Case



Flexible partner for welding thermoplastic roofing membranes on flat or pitched roofs (up to 30°). Thanks to its slim design and construction, as well as the movable transport axle, converting of the machine is no longer needed. Now, you can effortlessly weld close to the edge (4 inches) at the parapet or on the parapet and as easily in narrow circumstances. *Special Order

Product No | **Type**
8-UNIE120V | Uniroof AT Welder

Features:

- Controlled technology with display guarantees a constant and reliable weld for a leak proof roof
- 100% Swiss made quality
- Powder-coated, rust-free stainless steel housing and rustproof components
- Lightweight and compact

Leister 230V Uniroof AT w/Case



Flexible partner for welding thermoplastic roofing membranes on flat or pitched roofs (up to 30°). Thanks to its slim design and construction, as well as the movable transport axle, converting of the machine is no longer needed. Now, you can effortlessly weld close to the edge (4 inches) at the parapet or on the parapet and as easily in narrow circumstances. *Special Order

Product No | **Type**
8-UNIE230V | Uniroof AT Welder

Features:

- Controlled technology with display guarantees a constant and reliable weld for a leak proof roof
- 100% Swiss made quality
- Powder-coated, rust-free stainless steel housing and rustproof components
- Lightweight and compact

Leister 220V Varimat Cord



220v 100' Extension cord for Leister power products

Product No
8-AS-EXT

Special Order

TOOLS

Leister 110v Hand Welder ST



Primarily used for welding and plastic fabrication. This tool was developed with one idea always in mind: keep it simple. The TRIAC ST is a dependable, versatile, and user friendly hot air hand tool like its predecessor, the TRIAC S.

Product No | **Type**
 8-HWST | Triac ST Hand Welder

Hand Welder Element 120V 1600W-S



120V 1600W Replacement Heating Element. High temperature resistance alumina ceramic heating element use for handheld hot air tools.

Product No
 8-HWE

Voltage: 120 V
 Power: 1600 W
 Type: 33
 Diameter 26mm
 Weight: 0.1 kg
 Package: 1pcs

Leister Hand Welder Nozzle 40mm



1.5" (40mm) slot nozzle by Leister® can be used in combination with the Triac S, Triac ST and Triac AT.

Product No
 8-HWN

Hand Welder Element 120V 1550W-ST



120V 1550W Replacement Heating Element. High temperature resistance alumina ceramic heating element use for hand held hot air tools.

Product No
 8-HWSE

Voltage: 120 V
 Power: 1550 W
 Type: 33
 Diameter 26mm
 Weight: 0.1 kg
 Package: 1pcs

Leister Hand Welder Nozzle 20mm



1.5" (20mm) slot nozzle by Leister® can be used in combination with the Triac S

Product No
 8-HWN20

IB Hand Welder Kit



IB hand welder kit includes all of the items listed here. If you want individual items, use the individual product number.

Product No | **Type**
 8-WK | Hand Welder Kit

INCLUDES

8-HWST	Leister 110V Hand Welder
8-HWN	40mm Nozzle
8-SHR	2" Seam Roller
8-SP	Seam Probe
8-MS	Membrane Sheers
8-TOOL BAG	Hand Welder Bag

Winco 12K Generator



The 15 gallon fuel tank provides 9 hours of run time at full load so you won't have to take unscheduled breaks to refuel. The factory installed lifting bar makes it easy to get this generator on and off the roof while the four wheel dolly kit makes maneuvering this generator easy. It is durable enough to handle the hours while providing clean power for sensitive equipment.

Product No
 8-WG1200HE

TOOLS

IB Manual Millennium Heavy Duty Applicator



IB Millennium One Step™ Heavy Duty (Black) Manual Applicators are designed to be used with Millennium One Step™ Foamable Adhesives. They are powered by manually squeezing the trigger on the handle of the applicator which drives the piston rods.

Product No | **Type**
8-HDAPP | Manual Applicator

Features:

- Center drive design
- Lightweight and easy to use
- Produces 900 pounds of thrust
- Recommended for smaller jobs or congested areas

IB Battery Powered Millennium Applicator



Used to tighten down the ProSeal rubber seal on the IB Retrofit Drain.

*Special Order

Product No | **Type**
8-EQ7075 | Powered Applicator

Features:

- Battery powered
- Quick and easy use
- Trigger delay
- Durable construction
- Strong motor
- Portable, no cords or hoses
- Saves time and labor
- Saves battery charge
- Withstands everyday use
- Can dispense higher viscosity adhesives

IB Hand Welder Bag Only



Heavy Duty tool bag with reinforced bottom for rooftop protection.

Product No | **Type**
8-TOOLBAG | Carhartt Hand Bag

Seam Probe



Test seams to make sure they hold properly. Locate loose portions of seams for rework. Hand-held seam testers good for detail work in small areas.

Product No
8-SP

Membrane Slitter



Hand held roofing membrane slitter tool for PVC membranes. Plastic Body with Large Gripper Handle. Replaceable Blades.

Product No
8-MSLTR

2" Silicon Hand Roller



Silicone roofing roller that is Made in the USA. Perfect for any type of seam pressure rolling. High quality, heavy fork doesn't bend or twist from pressure. Ball bearings for long lasting tool and smooth rolling. 1-7/16" dia X 1-3/4" wide silicone roller.

Product No
8-SHR

Membrane Shears



Manufactured specifically for commercial roofers. Hot drop forged from chrome-moly steel. Precision machined and hardened. Chrome finish resists corrosion. Adjustable screw.

Product No
8-MS

IB Retrofit Drain Screwdriver



The extra long screwdriver has a square socket tip (#2 Robertson) for tightening the recess head screws on the compression seal. The 12 1/2" shaft of the screwdriver allows for ease of reach when tightening the Seal connection screws on all retrofit products. The screwdriver comes complete with a loss prevention bar.

Product No
8-RFDS

Return Policy

1. Please contact IB Roof Systems' customer service department to discuss any returns prior to returning products to IB Roof Systems.
2. IB Roof Systems does not accept returns on product delivered over 90 days.
3. Prior to a credit being issued, all products will be inspected by the IB Roof Systems' Quality Assurance Manager, or an inspector. This may affect credit issued.
4. Product is credited to the billing account only. No refund checks will be issued. Third party accounts will not be credited.

Restock / Freight Fees

1. In situations where the wrong product was ordered, the wrong quantity was ordered or project changes, the customer will be responsible for:
 - a. Freight Out (If IB Roof Systems Paid)
 - b. Return Freight
 - c. Restocking fee of 15%
2. The customer, upon receiving an approval, is responsible for arranging prepaid freight to Eugene, OR or Dallas, TX. We would request 24 hours notice before delivery.

Special Orders

1. Products such as scupper, special flashing, special metal, insulation adhesive, and special run items are considered "special orders". There are no returns on "special orders."

IB Roof Systems Responsibility

1. IB Roof Systems will accept returns and responsibility on any product due to an:
 - a. Error in Order Entry
 - b. Error in Order Processing
 - c. Order released before ship date
 - d. Product arrived damaged
2. When IB Roof Systems is paying freight on a return we will arrange for trucking.
3. There will be no return on the following products:
 - a. Special order cones, scupper and Metal
 - b. Insulation
 - c. Insulation adhesive (due to short shelf life)
 - d. Taper system
 - e. Cricket systems

MATERIALS MADE TO SHIP. TODAY.
 CONTRACTOR TRAINING.
 EASIER HANDLING. FASTER. SAFER.
 MORE COLORS - MORE OPPORTUNITIES
 CUSTOM FABRICATED PRODUCTS

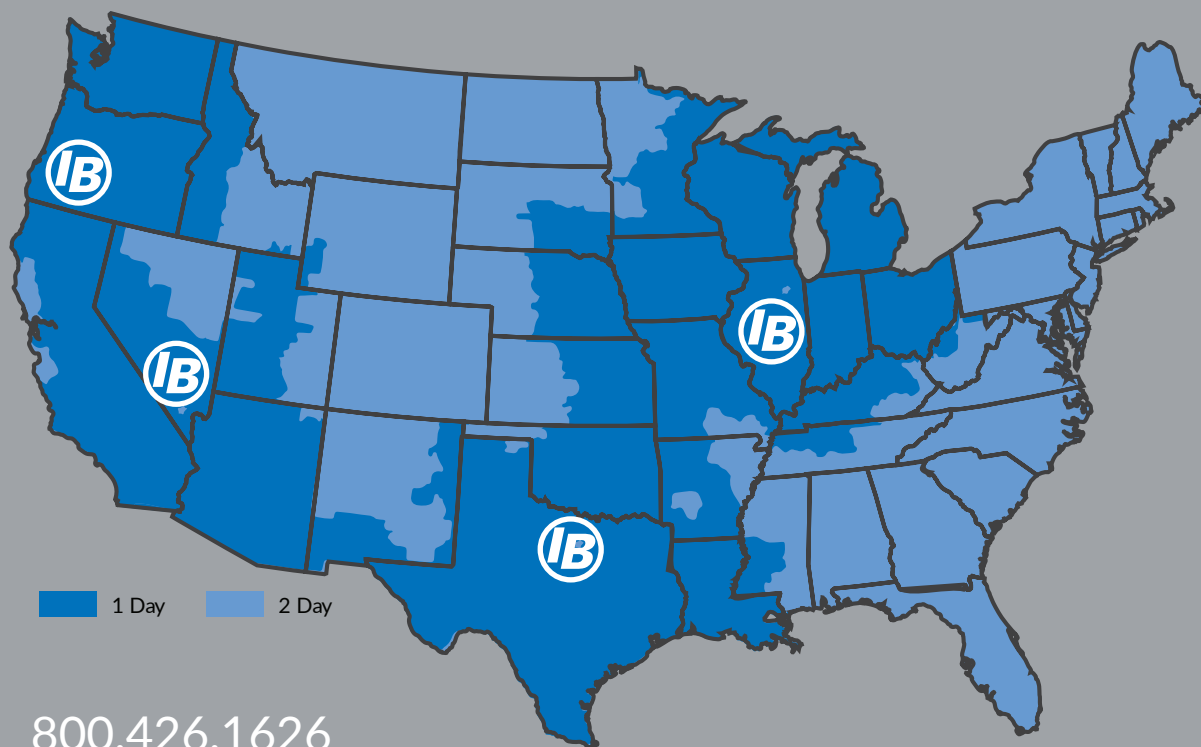
800.426.1626
IBroof.com

For more information and details -
 Please visit www.DiscovertheDifference.com



All product details and information included this catalog is subject to change without notice. While IB Roof Systems makes every effort to provide the most accurate, up-to-date information, some items in our catalog may be incorrect. Please refer to corresponding technical data sheets for the most current details, and specifications of each product. IB Roof Systems is a Registered trade mark. ENERGY STAR is a registered trademark of the US government. LEED is a registered trademark of the U.S. Green Building Council.

MATERIALS MADE TO SHIP. TODAY.
CONTRACTOR TRAINING
EASIER HANDLING. FASTER. SAFER.
MORE COLORS - MORE OPPORTUNITIES
CUSTOM FABRICATED PRODUCTS



800.426.1626
IBroof.com

We Have You Covered.

OREGON
5250 Highbanks Road
Suite 540
Springfield, OR 9747

NEVADA
2965 Lincoln Road
Las Vegas, NV 89115

TEXAS (HQ)
8181 Jetstar Drive
Suite 150
Irving, TX 75063

ILLINOIS
1227 Lakeside Drive
Unit # 3
Romeoville, IL 60446

To download or share
a digital copy - scan
the QR code here.

