

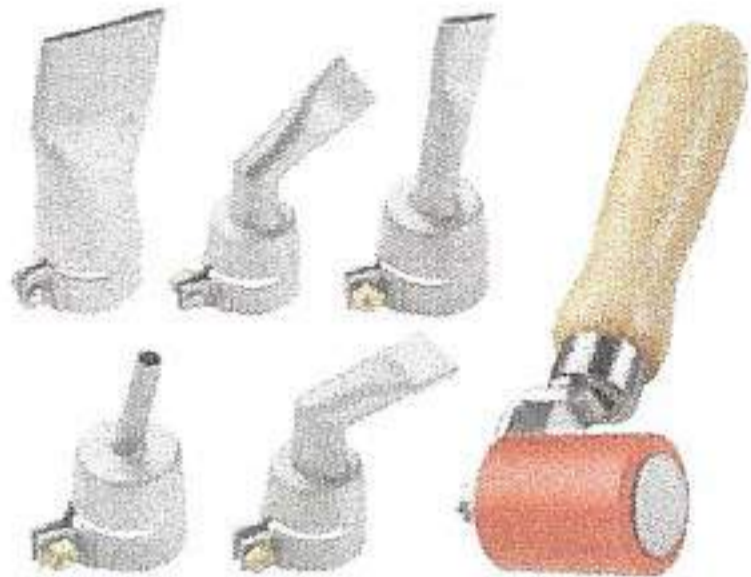
# EAGLE 3000 MADE IN USA

100% designed, manufactured and serviced in the United States.



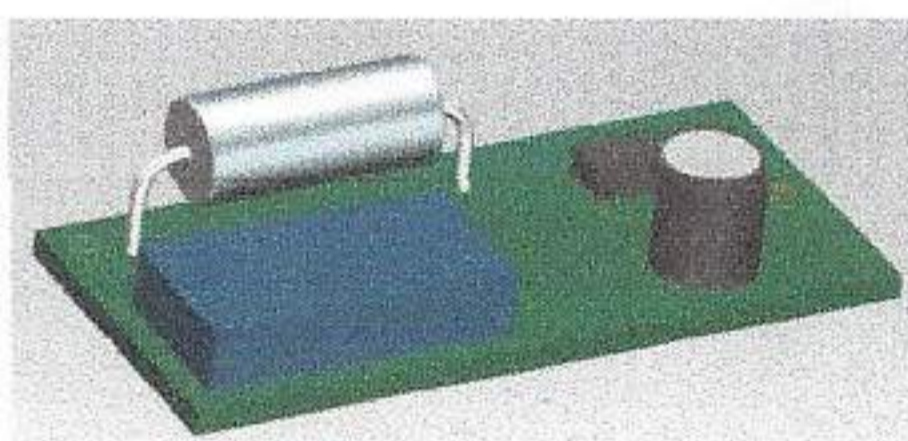
## FABRICATED STAINLESS STEEL PARTS

- **manufactured in Indiana.** Stainless steel nozzle pushes on easily, can be replaced in seconds. Available in 1-7/8" (45mm) wide, 3/4" (20mm) wide, and 5/16" (8 mm) diameter pencil tip. Stainless steel nozzle tips and single-arm seam roller simplify welds around equipment protrusions and in other tight spaces.



## CIRCUIT BOARD -

**manufactured in Illinois.**



## READILY AVAILABLE PARTS AND SERVICE - located in Chicago.

With all Eagle hot-air welding tools, replacement heating elements, as well as the welder can be available for immediate service with a simple phone call to our Chicago office.

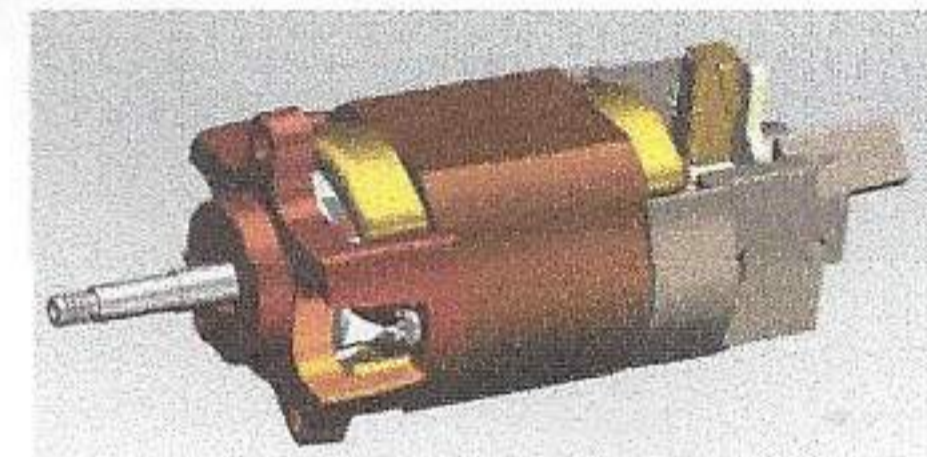


## HEATING ELEMENTS AND PLASTIC PARTS -

**manufactured in Ohio.** Plug-in heating element is easily replaced in the field. Electronic temperature control permits precise temperature adjustments from ambient to 1200°F (650°C), independent of voltage or nozzle variations. Built-in over-temperature control protects heating element and electronics from thermal runaway.



## MOTOR - manufactured in Wisconsin.



Heavy duty fan motor has 1800 hour carbon brush life. Screened air inlet prevents dirt, dust and debris from entering and damaging motor and heating element. Heavy-duty strain relief protects electric cord from pullout.



Performance Specifications	
Model:	<b>EAGLE 3000</b>
Temperature:	<b>Ambient to 1200°F (650°C)</b>
Air Flow:	<b>6-8 CFM (170-230 litres/min.)</b>
Wattage:	<b>1600 watts @ 120/220 VAC</b>
Voltage:	<b>120 or 220 VAC, 50/60 Hz.</b>
Weight:	<b>2.4 LBS (1.1kg.)</b>
Options & Accessories:	<b>1-1/2" (40 mm) wide-slot nozzle (included with unit)</b>
	<b>3/4" (20mm) wide-slot nozzle</b>
	<b>3/16" (5mm) inside dia. round nozzle</b>
	<b>3/4" (20 mm) angled nozzle</b>