

Burkeline[®] Mechanically Fastened CSPE System



Burkeline[®] Roofing Systems
a division of Burke Industries

A Single-Ply Roofing System that Meets the Time, Money, and Energy Challenge

Across the country and around the world, Burkeline® CSPE (chlorosulfonated polyethylene) roofing materials provide outstanding performance and protection, even under the most adverse conditions.

Whether it's a new roof or a reroofing project, Burke Industries will fully warrant your installation and back it with our 50 years of designing, developing, and producing products for the construction industry.

With its outstanding benefits and performance, it's no wonder that more and more architects, contractors, building owners, and maintenance personnel are specifying Burkeline Roofing Systems.

Installation Savings with the Burkeline System

New Installations:

Burkeline-trained and approved applicators simply layout and fasten the insulation board, roll on the Burkeline CSPE single-ply, fasten it with Burke-approved and supplied fasteners and plates, weld the seams, and the installation is complete. There's no need for additional attachment or ballast.

Burke's CSPE System may be installed under marginal weather conditions when other systems cannot. There will be minimum installation delays due to weather problems.

Reroof Installations:

Generally, Burkeline CSPE may be installed over your old roof covering without expensive removal of the existing material. Burkeline single-ply material weighs less than 1/3-pound per square foot so it can be installed directly over the old roof.

New installation is mechanically attached and the Burkeline Hypalon roof is installed just as a new roof installation.

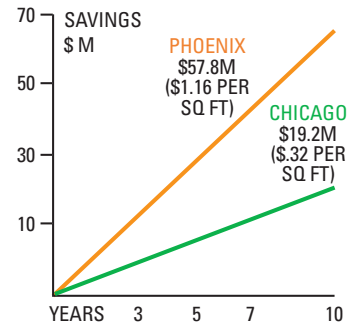


The Ensphere Dome, located in Eager, Arizona

Regardless of whether you are installing a roof on a new structure or are reroofing your building, the Burkeline System will go on cleaner, faster, safer, and with fewer problems.

Burke CSPE... Weathering the Worst Conditions with Flying Colors

For more than 35 years, Burke has continued to refine the Hypalon single-ply roofing material for use in a broad range of applications and weather conditions. CSPE gives you excellent performance in any climate.



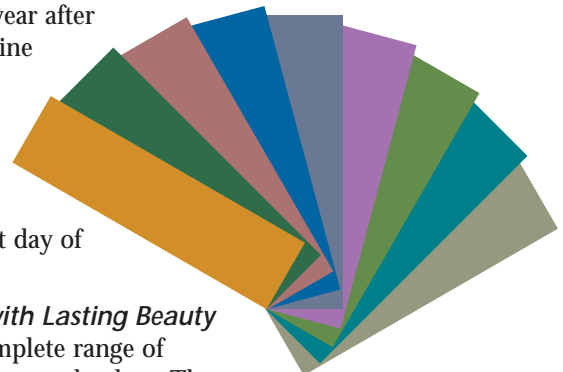
Attractive and Energy Efficient

The standard color for the Burkeline Roofing System is bright white with a black backing. Reflective tests have proven that white provides optimum energy efficiency and can save the building owner up to 50% on energy costs.

These energy savings are realized again and again, year after year, since Burkeline CSPE Roofing Systems last longer than other roofing systems. Savings start from the first day of installation.

Custom Colors with Lasting Beauty

Burke offers a complete range of attractive, environmental colors. The unique properties of Burkeline CSPE gives



The Burkeline System. Meeting and Exceeding the Standards.

To meet these, as well as our own stringent requirements, Burke has perfected a double-laminated construction that encapsulates a strong, reinforcing polyester fabric in the material. The fabric provides maximum tear, abrasion, and puncture resistance. It also provides excellent protection from strong wind damage. The special double-ply calendaring process results in pinhole-free construction to assure leak-free performance.



In addition, the fabric provides the dimensional stability and membrane strength that is necessary for mechanical attachment.



For more than 30 years, Burke has continued to refine the CSPE single-ply roofing material to withstand the harshest conditions and the test of time. In fact, overtime the CSPE material gradually cures, becoming stronger with age and improving its watertight, and its abrasion and chemical resistance characteristics.



you lasting color through the harshest weather. By mixing the pigment throughout the CSPE material during production, the color is retained during the life of the roof, without additional coating maintenance.

Roofing installations of this material completed in 1980 still retain the same level of color, showing no signs of fading or discoloration.

Burkeline... a System of Proven Reliability in Thousands of Applications

The Burkeline Roofing System has been designed to incorporate a special thermoset CSPE rubber compound that can readily be heat seamed and/or solution welded.

The two seaming methods were developed because not every roof is flat and free of penetrations. Heat seaming is ideal for long stretches of Burkeline flexible membrane. Heat seaming alone around HVAC vents, exhausts, or roof hatches isn't always practical.

Burke developed a special welding solution to augment heat welding for just such cases. The solution contains the same CSPE compound as the roof itself. With either method, you are assured of seam life as great as the single-ply roofing material itself.

Excellent Flex Life and Virtually Maintenance-Free Roofing

Continual expansion and contraction with changing temperatures and weather conditions is a major cause of leaks in roofs with rigid roofing materials. CSPE is an elastomer and will accommodate all normal building movement. And since CSPE does not become brittle—even after years of exposure—it will continue to flex and remain leak-free year after year.

Burke's unique CSPE formulation permits repairs that produce welds as strong as the roofing material itself, even after years of service on your roof. In fact, several Burkeline mechanically fastened roofs have sustained minor damage by hurricanes and tornados and were repaired and made water-tight again in less that 24 hours.

Burkeline Approved Applicators. Your Assurance of Lasting Quality and Beauty

The vital link between you, your installation, and Burke Industries is provided by Burkeline-approved applicators. All Burke applicators are carefully selected based on their demonstrated expertise and reputation. Once chosen by Burke Industries, applicators are given a comprehensive and rigorous training program by Burkeline technical field specialists. This ensures that each roof they install will pass even the most stringent specifications and quality assurance programs enforced in the roofing industry.

In addition to ensuring a quality, trouble-free installation of your new Burkeline roof, the approved applicators provide valuable feedback to Burke so we may continue to develop improved products and procedures.

Burke Technical Support

The Burke Roofing technical staff is available right from the start, making sure you get the quality roof installation you want and need.

Before your installation may begin, detailed plans and specifications are submitted to Burke for review and approved Burkeline roofing specialists verify that the design meets specifications. Potential problems are addressed before work begins so costly

Burkeline Mechanically Fastened Facts

- *Ideal for new, reroof installations*
- *Installed by Burkeline-trained and approved applicators*
- *Clean, fast, easy installation*
- *Economical*
- *Full, leakproof system warranty*
- *Virtually maintenance-free*
- *Energy-efficient (up to 50% energy cost savings)*
- *Fire-resistant*
- *Wind-resistant*
- *No ballast needed*
- *Durable (puncture-resistant)*
- *High-abrasion/tear resistance*
- *Airborne pollutant-resistant*
- *Attractive, environmental colors*
- *Chemical-resistant*
- *Tested, proven construction*
- *Ideal roofing for:*
 - Industrial Plants*
 - Warehouses*
 - Office Buildings*
 - Shopping Centers*
 - Hospitals*
 - Retail Centers*
 - Medical Centers*
 - Government Buildings*
 - Schools*

delays are eliminated.

Technical representatives are available for on-the-job consultation.

Quality Assurance and Warranty

Upon notification by the Burkeline applicator that your installation is complete, the factory field specialist is promptly scheduled for final inspection.

With previously approved installation plans and specifications in hand, the Burke technician inspects every phase of the installation. These exacting procedures help to ensure that Burkeline



100,000 square foot Safari Business Center
in Ontario, CA



specifications and quality standards are fulfilled.

Any deviation from product specification or quality requirements must be corrected by the applicator before the application is accepted by Burke Industries. Then, and only then, will Burke accept the roofing installation and issue your full system warranty.

Your warranty is backed by Burke Industries, a company that has over 50 years of experience and expertise in the development, design, manufacture, supply, and installation of quality products for the building and construction industry.

The Complete System

Burke provides or approves all components in your CSPE single-ply system. The result is a totally integrated system that is engineered, manufactured, installed, and warranted by Burke and our trained applicators. You are provided with exceptional, trouble-free performance at the lowest possible real cost.

Certified and Unequaled Performance

Burke Industries became a leader in the development of CSPE flexible membrane over 40 years ago. Over the years we have applied this expertise to helping building owners across the country and around the globe. The result is a total roofing system that provides unequalled performance.

Wind Resistance—The Burkeline Mechanically Fastened Roofing System has been approved by Factory Mutual for Class 1 Fire and I-60 and I-90 wind uplift classifications, under the 4470 standard.

Fire Resistance—The Burkeline System has been approved for Class A and Class B classifications by Underwriters Laboratories.

Cold Weather Applications—Burkeline single-ply materials remain flexible, even at low temperatures. Hot-air and welding solution seaming can be conducted even in very cold weather.



2250 South Tenth Street • San Jose, CA 95112
Toll-Free: 800-669-7010 x 406 • 408-297-3500 • Fax: 408-280-0938
email: sroades@burkeind.com • www.burkeind.com

Chemical Resistance—Burkeline materials are resistant in a wide range of chemicals which quickly destroy conventional roofing materials. This includes many industrial and commercial chemicals, airborne pollutants, acid rain, fly ash, and ozone.

Tear/Abrasion Resistance—Whether it is a parent material or a seam, the Burkeline Roofing System has been proven to provide excellent resistance to abrasion and tears in both on-roof tests and in the lab.

Excellent Ultraviolet Resistance—Laboratory and in-field tests have shown that Burkeline Hypalon-based membrane will provide excellent protection, even after 30 years of exposure to direct sunlight. The membrane didn't crack, peel, or deteriorate with age or exposure.

Additional Burkeline Information on all Burkeline Roofing Installation Methods

For complete technical information, installations listing, specifications, installation details/instructions, service/maintenance procedures, and samples please contact your local certified Burkeline Roofing applicator or Burke Industries.

In addition to Mechanically Fastened Systems, Burke offers Fully Adhered Systems as well as the revolutionary Vac-Q-Roof™ Roofing System. Complete information on these systems is available by calling Burke Industries at **1-800-669-7010**

Burkeline Specifications

The following are recommended property values for the Burkeline Mechanically Fastened CSPE System. Complete roofing specifications information is available through your local Burke Technical Representative.

Physical Properties	Test Method	Typical Average Values
Thickness, Mils	ASTM D751	45 nominal
Reinforced Scrim Weight	visual	1,000 deiner
Hardness (Shore A)	ASTM D2240	85 ± 5
Weight, lbs/sq.ft.	—	0.32
Ply Adhesion, lbs/inch width	ASTM D413	10
Tensile Properties		
1. Breaking Strength	—	275
Heat Aging		
1. Breaking Strength, retention	14 days@212° F	100%
Tear Strength—propegation		
1. Machine Dirctn, lbs.	ASTM D752	85
2 Transverse Dirctn, lbs.	Tounge Tear (8"x8" sample)	93
Puncture Resist., lbs.	FTMS 101C, Method 2031	251
Low Temp Bend	ASTM D2036-4 hours@-40°F	Pass
Ozone Resistance	ASTM D1149-1/8" bent loop, 100 pphm, 7 days@104°F	7x No Cracks
Accelerated Weathering	ASTM E838 EMMAQUA 3 million Langleys (equivalent to 20 years average outdoor exposure)	Pass without Degradation

* Short-term volatile loss used to indicate materials' potential for shrinkage. Burkeline CSPE Roofing Membrane, when properly installed, will exhibit no shrinkage due to volatile loss.